

Parcels for Sale Cable Greens

Urban Mixed-Use Waterfront Development

Cable Greens is ideal for a mix of residential and commercial builds with areas that could accommodate retail and specialty businesses or other complementary commercial enterprises.

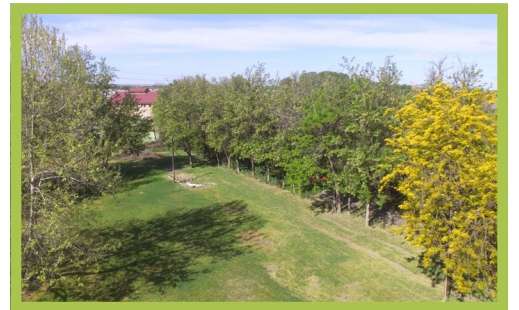
The site is in historic downtown Kennewick near the Cable Bridge on State Route 397. Kennewick is part of the Tri-Cities (Kennewick, Pasco, Richland) in southeastern Washington – the fourth largest metropolitan statistical area in the state, with a population of more than 300,000.



TERMS: \$6.50 per square foot | Project subject to approval by Port of Kennewick

Space Highlights:

- 3.20 developable acres (PTN:1-3190-303-0108-000 & 1-3190-303-0107-003)
- Located in a federally designated Opportunity Zone
- Close to Clover Island and Columbia Gardens Wine & Artisan Village
- Property overlooks a nature pond with abundant wildlife
- Adjacent to a paved pathway and Columbia River waterfront
- Pathway connects with the Clover Island Riverwalk and 23-mile regional Sacagawea Heritage Trail
- Views of the Cable Bridge to the east and sunsets to the west
- Pedestrian-friendly, walkable, destination development
- High-volume traffic counts on the adjacent Columbia Drive
- Quick access to U.S. 395 and State Routes 397 and 240



PORT of
KENNEWICK

For more information or a tour contact:
Amber Hanchette, Director of Real Estate and Operations
(509) 586-1186 | Amber@PortofKennewick.org
PortofKennewick.org

