

To continue to provide public access to meetings, Port of Kennewick will provide telephonic, video access, and in-person participation options to the public.

To participate by telephone, please call in at: 1-866-899-4679, Access Code: 606-494-093
Or, join on-line at the following link: <https://meet.goto.com/606494093>

AGENDA

Port of Kennewick
Regular Commission Business Meeting
Port of Kennewick Commission Chambers and via GoToMeeting
350 Clover Island Drive, Suite 200, Kennewick Washington

February 11, 2025
2:00 p.m.

- I. **CALL TO ORDER**
- II. **ANNOUNCEMENTS AND ROLL CALL**
- III. **PLEDGE OF ALLEGIANCE**
- IV. **PUBLIC COMMENT** *(Please state your name and address for the public record)*
- V. **CONSENT AGENDA**
 - A. Approval of Direct Deposit and ePayments February 4, 2025
 - B. Approval of Warrant Register Dated February 11, 2025
 - C. Approval of Regular Commission Meeting Minutes January 28, 2025
- VI. **PRESENTATIONS**
 - A. Vista Field Collaborative Design / Construction Observation Process, Michael Dale (**AMBER**)
- VII. **ACTION ITEM**
 - A. Artwork Opportunities; Resolution 2025-02 (**TANA**)
- VIII. **REPORTS, COMMENTS AND DISCUSSION ITEMS**
 - A. Vista Field
 1. Types of Institutional Users (Steps 1 and 2) (**TIM**)
 - B. Kennewick Waterfront
 1. Clover Island Marina Update (**TIM/KANDY/MICHAEL**)
 - C. Long Term Projects/Issues/Matters of Consideration (**TIM**)
 - D. Commission Election (**CAROLYN**)
 - E. CEO Report (if needed) (**TIM**)
 - F. Commission Meetings (formal and informal meetings with groups or individuals)
 - G. Non-Scheduled Items
(**LISA/BRIDGETTE/TANA/NICK/LARRY/AMBER/MICHAEL/CAROLYN/TIM/KEN/TOM/SKIP**)
- IX. **PUBLIC COMMENT** *(Please state your name and address for the public record)*
- X. **ADJOURNMENT**

PLEASE SILENCE ALL NOISE MAKING DEVICES



PORT OF KENNEWICK REGULAR COMMISSION MEETING

DRAFT

JANUARY 28, 2025 MINUTES

Commission Meeting recordings, with agenda items linked to corresponding audio, can be found on the Port's website at: <https://www.portofkennewick.org/commission-meetings-audio/>

Commission President Skip Novakovich called the Regular Commission Meeting to order at 2:00 p.m.

ANNOUNCEMENTS AND ROLL CALL

The following were present:

Board Members: Skip Novakovich, President
Kenneth Hohenberg, Vice President (via telephone)
Thomas Moak, Secretary

Staff Members: Tim Arntzen, Chief Executive Officer
Tana Bader Inglima, Deputy Chief Executive Officer
Nick Kooiker, Deputy Chief Executive Officer/CFO (via telephone)
Larry Peterson, Director of Planning and Building (via telephone)
Amber Hanchette, Director of Real Estate
Michael Boehnke, Director of Operations
Bridgette Scott, Executive Assistant (via telephone)
Lisa Schumacher, Special Projects Coordinator
David Phongsa, Marketing/Capital Projects Coordinator (via telephone)
Carolyn Lake, Port Counsel (via telephone)

PLEDGE OF ALLEGIANCE

Paul Krupin led the Pledge of Allegiance.

PUBLIC COMMENT

Mike Luzzo, Kennewick. Mr. Luzzo is supportive of placing the Hellcat photo on the Vista Field hangar.

No further comments were made.

CONSENT AGENDA

- A. Approval of Direct Deposit and E-Payments Dated January 17, 2025**
Direct Deposit and E-Payments totaling \$101,100.83
- B. Approval of Warrant Register Dated January 28, 2025**
Expense Fund Voucher Number 106620 through 106653 for a grand total of \$153,783.25
- C. Approval of Regular Commission Meeting Minutes January 14, 2025**

MOTION: Commissioner Moak moved to approve the Consent Agenda presented; Commissioner Hohenberg seconded. With no further discussion, motion carried unanimously. All in favor 3:0.

PORT OF KENNEWICK REGULAR COMMISSION MEETING

JANUARY 28, 2025 MINUTES

DRAFT

PRESENTATION

A. *Tri-Cities C.A.R.E.S. Horse Heaven Wind Farm Project Update, Paul Krupin*

Mr. Arntzen introduced Paul Krupin, a member of the Tri-Cities C.A.R.E.S. group, who will be speaking on the Horse Heaven Wind Farm Project.

Mr. Krupin thanked the Commission and introduced additional C.A.R.E.S. members in the audience. Mr. Krupin stated Tri-Cities C.A.R.E.S., the Yakima Nation, and Benton County are fighting a legal battle to prevent the Tri-Cities from being significantly impacted by the Horse Heaven Hills Wind Farm Project (*Exhibit A*).

Commission discussion commenced regarding the Heaven Hills Wind Farm Project.

REPORTS, COMMENTS AND DISCUSSION ITEMS

A. *Visa Field*

1. *Hellcat Mural Options*

Ms. Bader Inglima presented renderings of the Hellcat Airplane, which may be placed on the Vista Field Hangar (*Exhibit B*) and inquired if the Commission had a preference regarding the direction of which the Hellcat Airplane is faced.

Commissioner Moak prefers the Hellcat Airplane nose facing left inviting people into Vista Field.

Commissioner Hohenberg stated either way is great and believes it is a statement piece for the area and supports the artwork.

Commissioner Novakovich agrees with Commissioner Moak and prefers Hellcat Airplane nose facing left and is fully supportive of the artwork.

B. *Potential Artwork Opportunities*

Ms. Bader Inglima presented several suggestions for artwork at Vista Field (*Exhibit C*), which is part of Mr. Arntzen's 2025-2026 goals.

- Art Wrap 8 large utility boxes;
- Metal Fish placed in Vista Field from the City of Kennewick (previously on Canal Drive);
- Revisit Silas Project, Mars Artwork at Daybreak Commons;
- Bronze Markers;
- Bench and frame/frame;
- Giant Chairs/Benches

Mr. Arntzen stated the art budget is \$100,000 and some of these projects may be more challenging than others. Mr. Arntzen suggested staff prepare a draft artwork plan based on Commission comments today. Mr. Arntzen offered comments on the proposed artwork.

PORT OF KENNEWICK REGULAR COMMISSION MEETING

JANUARY 28, 2025 MINUTES

DRAFT

Commissioner Hohenberg suggested some of our local service organizations may be interested in sponsoring some of the artwork.

Commissioner Moak is in support wrapping the utility boxes and suggested a historical picture of the Vista Railroad stop. Commissioner Moak recalled the Kennewick Man of the Year is working on the Silas (Mars) art project, and it may have relocated to Columbia Park. Commissioner Moak offered additional comments on the artwork and stated he likes Commissioner Hohenberg's suggestion of sponsorships.

Commissioner Novakovich would like staff to send the Commission a list of art projects for ranking and then discuss them at a later date. Commissioner Novakovich stated the plane is his number one choice.

Mr. Arntzen inquired if the Commission prefers staff to come back with a draft plan encapsulating the Commission comments or the Commission ranks the projects, and then staff comes back with a proposed path forward based on the ranking.

Commissioner Novakovich believes the art should be ranked first and then the staff and Commission can discuss the cost and timing associated with the project. Commissioner Novakovich believes the Hellcat Mural will most likely be at the top of the list.

Commissioner Moak stated based on the comments, it sounds like plane is a go. He would like to see some numbers associated with the art before trying to rank them.

Mr. Arntzen stated staff will work on coming up with estimated costs for the art projects with the list for ranking and then compile the information for a future meeting.

C. *Kennewick Waterfront*

1. *WineVit Show February 10-12, 2025*

Ms. Bader Inglima stated the Port will have a booth at the WineVit Show (formerly known as the Washington Association of Wine Grape Growers Show) to promote Columbia Gardens. Ms. Bader Inglima, Mr. Phongsa and Ms. Hanchette will be working the booth along with Rohanna Carmichael and Jocelyn Giles from the City of Kennewick.

D. *CEO Report*

Mr. Arntzen reported on the following:

- A memo to the Commission regarding long-term projects/opportunities/challenges;
- The KIE/Willows land trade is moving forward;
- Identifying institutional users for Vista Field;
- Recognizing staff time assisting Vista Field landowners with construction activity at the correct pace.

E. *Commissioner Meetings (formal and informal meetings with groups or individuals)*

Commissioners reported on their respective committee meetings.

PORT OF KENNEWICK REGULAR COMMISSION MEETING

JANUARY 28, 2025 MINUTES

DRAFT

F. Non-Scheduled Items

Ms. Bader Inglima is working on the marketing materials for the 2025-2026 Work Plan.

Ms. Hanchette reported Blueberry Bridal closed on Vista Field Lot 18 today and Ms. Keller is working on her completing the City permit process and her contractor is ready to go.

Ms. Hanchette stated the Port currently has two buy back clauses open: Kuki Izakya and Blueberry Bridal.

Commissioner Hohenberg complimented the CEO regarding the Covid remote policies and his thoughtful leadership during that time. Because of that policy, Commissioner Hohenberg was able to remote into the Commission Meeting today and he appreciates the fact that the Port is able to protect the public, staff and Commission with this remote policy. Additionally, Commissioner Hohenberg thanked Ms. Scott for her assistance today.

Commissioner Moak reported that Kyle Lepper spoke to his Kiwanis group last week regarding his projects at Vista Field: Kuki Izakaya and Cantley Vision. Commissioner Moak stated Mr. Lepper is complimentary of Vista Field, the process, and working with staff.

Commissioner Moak stated he will be remote during the February 11, 2025 Commission Meeting.

Commissioner Novakovich is supportive of the direction that Mr. Arntzen takes towards maintaining the pace of Vista Field and ensuring that the Port takes care of the people who invest in Vista Field.

PUBLIC COMMENTS

Mike Luzzo, Kennewick. Mr. Luzzo had questions regarding the Horse Heaven Wind Farm Project.

Commissioner Novakovich asked Mr. Luzzo to direct his questions to Mr. Krupin once the meeting adjourns.

No further comments were made.

COMMISSION COMMENTS

No comments were made.

ADJOURNMENT

With no further business to bring before the Board; the meeting was adjourned at 3:28 p.m.

**PORT OF KENNEWICK
REGULAR COMMISSION MEETING**

JANUARY 28, 2025 MINUTES

DRAFT

APPROVED:

**PORT of KENNEWICK
BOARD of COMMISSIONERS**

Skip Novakovich, President

Kenneth Hohenberg, Vice President

Thomas Moak, Secretary

Tri-Cities C.A.R.E.S.

[Learn More](#) [Take Action](#) [About Us](#) [Projects](#)

[Resources](#) [Contact Us](#)



[Please Donate](#)

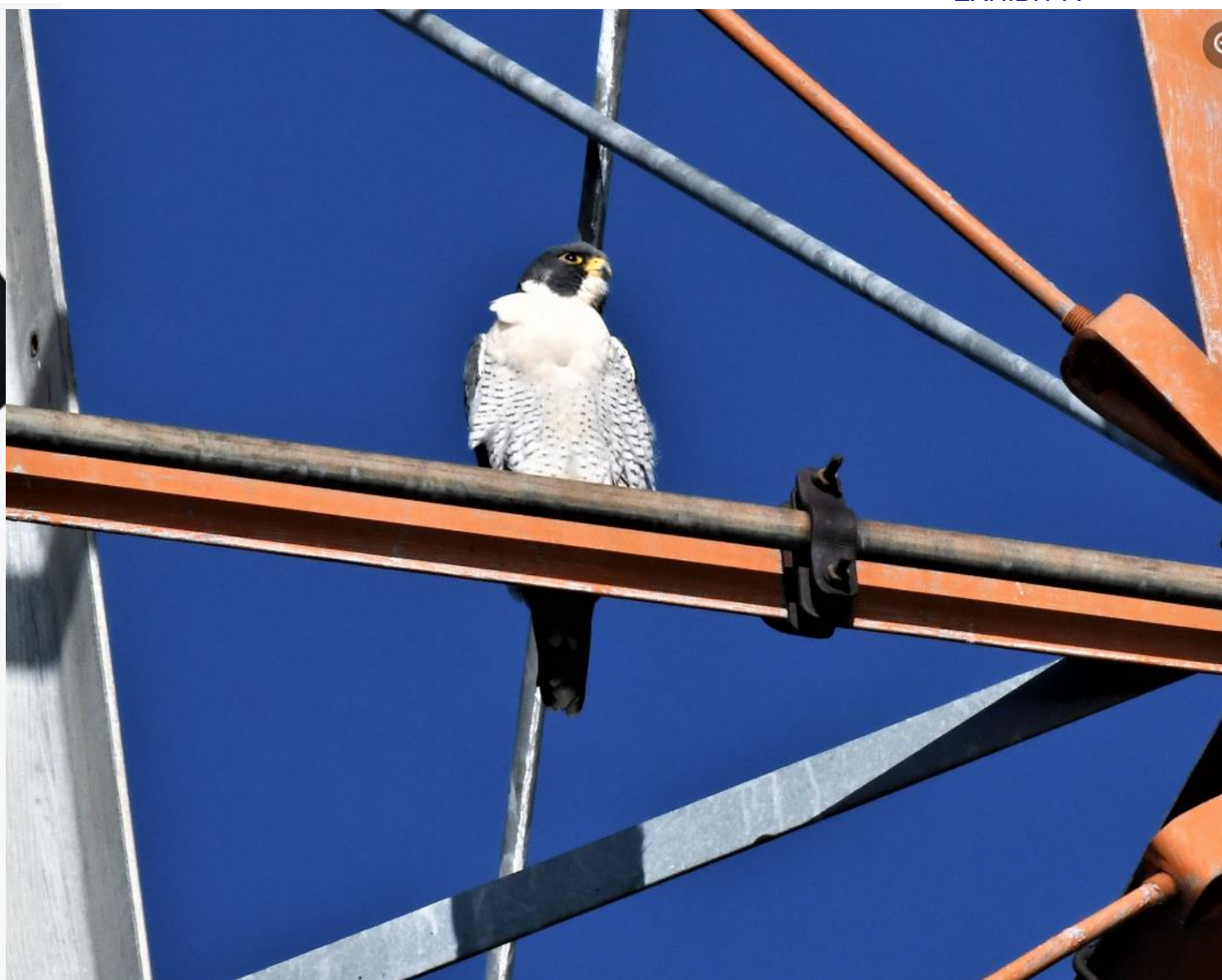
Horse Heaven Wind Farm Project Update

What is the future of Tri-Cities?

[Learn More](#)

*Community Action for
Responsible Environmental
Stewardship*

[Latest News
and
Milestones](#)



Peregrine Falcon, Clover Island, up in the power line tower just outside Port of Kennewick office.

Tri-Cities CARES, Yakama Nation and Benton County are fighting a legal battle to prevent the Tri-Cities from being significantly impacted by the Horse Heaven Hills Wind and Solar Project.



Original EFSEC April 23, 2024
recommendation reduced the allowable
area for wind turbines to protect wildlife,
cultural resources, visual impacts, and
aerial firefighting.



The Governor sent Remand Directive to EFSEC to add more wind turbines

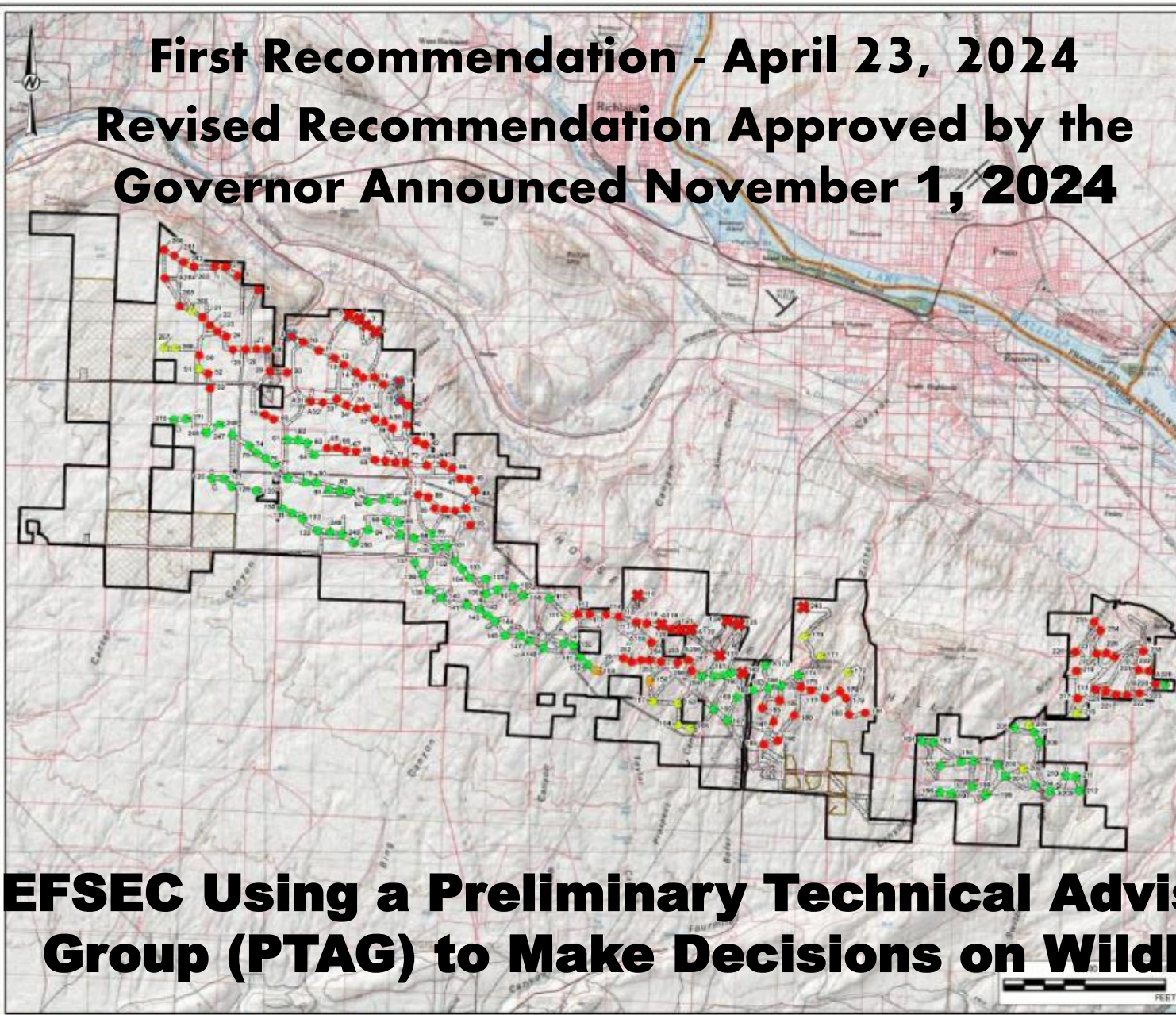
May 23, 2024.

EFSEC held a Special HHH session on Aug 29, 2024 – revised Recommendation.

Governor approved the Second Recommendation October 18, 2024.

Parties filed lawsuits ~ December 1, 2024.

First Recommendation - April 23, 2024
Revised Recommendation Approved by the
Governor Announced November 1, 2024



LEGEND

Turbine Location - Layout Option 1

- Class 0 Impact
- Class 1 Impact
- Class 2 Impact
- Class 3 Impact
- ★ Turbine Moved to New Location
- ★ Turbine Removed
- ▭ Project Lease Boundary
- ▭ Solar Siting Area
- ▭ Micrositing Corridor

IMPACT CLASS DEFINITIONS:
 CLASS 0 = LOWEST IMPACT
 CLASS 1 = IMPACTS ONE RESOURCE
 CLASS 2 = IMPACTS TWO RESOURCES
 CLASS 3 = HIGHEST IMPACT

Fine Print

Fine Print

NOTES:

- CONFIDENTIAL RESOURCE INFORMATION THAT WAS INCORPORATED INTO THESE IMPACT RATINGS IS NOT DISPLAYED ON THIS MAP IN ACCORDANCE WITH RCW 43.21C.001. HOWEVER, A VERSION OF THIS MAP WITH THE CONFIDENTIAL RESOURCE INFORMATION DISPLAYED HAS BEEN MADE AVAILABLE TO THE EFSEC COUNCIL.
- TURBINES IDENTIFIED FOR REMOVAL, WERE PROVIDED BY SCOUT IN AUGUST 8, 2023. REAR RE: HORSE HEAVEN WIND FARM ANTICIPATED PROJECT MODIFICATIONS FOR FINAL APPLICATION FOR SITE CERTIFICATION.

REFERENCES:

- PROJECT FEATURES - HORSE HEAVEN WIND FARM, LLC, 2023
- DEWETZ, J. (2021) NATIONAL LAND COVER DATABASE (NLCD) 2019 PRODUCTS (DATA-SET)
- U.S. GEOLOGICAL SURVEY. <https://doi.org/10.5066/9668ZM9M>
- U.S. GEOLOGICAL SURVEY. US-HISTORIC TOPOGRAPHIC MAP
- SERVICE LAYER CREDITS. COPYRIGHT © 2013 NATIONAL GEOGRAPHIC SOCIETY, INCUBED
- COORDINATE SYSTEM: NAD 83 UTM 20N 11N

CLIENT:
State of Washington Energy Facility Site Evaluation Council

PROJECT:
Horse Heaven Wind Farm

FIGURE TITLE:
Turbine Layout Option 1 - Areas of High Impact

DATE:	2023-10-25
DESIGNED:	MK
PREPARED:	MK
REVIEWED:	SH
APPROVED:	JP

PROJECT NO.: 31405435.000 **CONTROL:** 03 **REV:** 0 **FIGURE:** 2-5

EFSEC Using a Preliminary Technical Advisory
Group (PTAG) to Make Decisions on Wildlife

Figure 2-5: Turbine Layout Option 1 - Areas of High Impact

LEGEND

Turbine Location - Layout Option 1

- Class 0 Impact
- Class 1 Impact
- Class 2 Impact
- Class 3 Impact

IMPACT CLASS DEFINITIONS:
CLASS 0 = LOWEST IMPACT
CLASS 1 = IMPACTS ONE RESOURCE
CLASS 2 = IMPACTS TWO RESOURCES
CLASS 3 = HIGHEST IMPACT

- ✦ Turbine Moved to New Location
- ✖ Turbine Removed
- ▭ Project Lease Boundary
- ▭ Solar Siting Area
- ▭ Micrositing Corridor

**Wildlife
Cultural
Visual**

**Less Mitigation
Means More
Turbines**

**Governor's
Remand
Decision
Minimizes
Turbine
Removal**

more significant negative impacts

Governor Dismisses Significant Unavoidable Adverse Impacts – Wildlife, Cultural, Visual and Aerial Firefighting

EXHIBIT A

The Final EIS states: “Post-mitigation and Applicant commitments, the turbines would still dominate views from many key observation points and the landscape would appear strongly altered.”

EFSEC

Computer simulation from the top of the Badger Mountain Preserve
Reference: [The Final Environmental Impact Statement October 31, 2023](#)

Legal Battle for The Future of Tri-Cities

The turbines will be visible from all over Benton and Franklin County.

The visual and aerial firefighting impacts from will be felt by tens of thousands of people and businesses in residential communities and high interest tourism and well-traffic locations throughout the Tri-Cities.

Horse Heaven Hill Wind and Solar Project

Horse Heaven
Wind Project



Overview Map
Turbine Layout Option 1
BENTON COUNTY, WA

EXHIBIT A

**25 miles west to east
and 4 to 6 miles wide
north to south, goes
from Benton City all the
way to Finley.**

Same distance as:

- **Seattle to North Bend**
- **Seattle to Tacoma**
- **Seattle to Everett.**

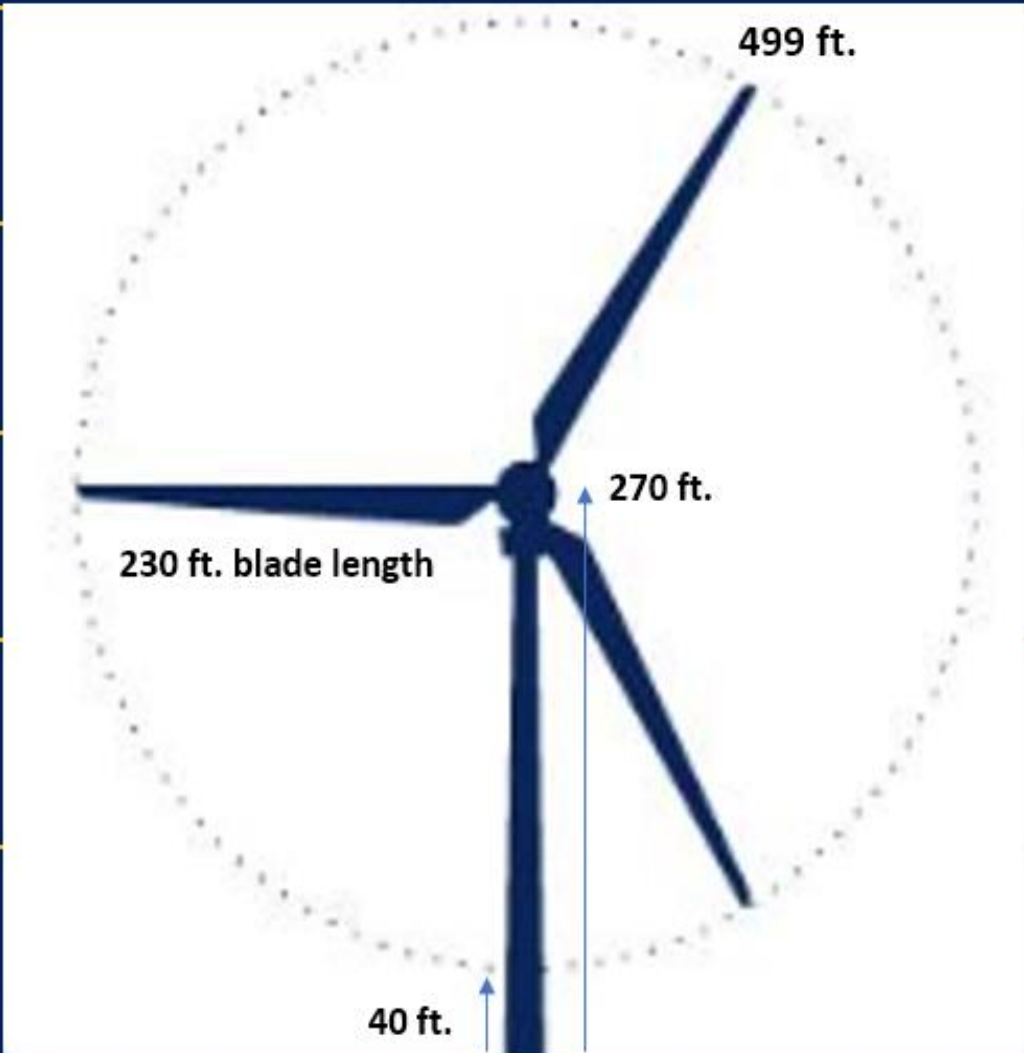
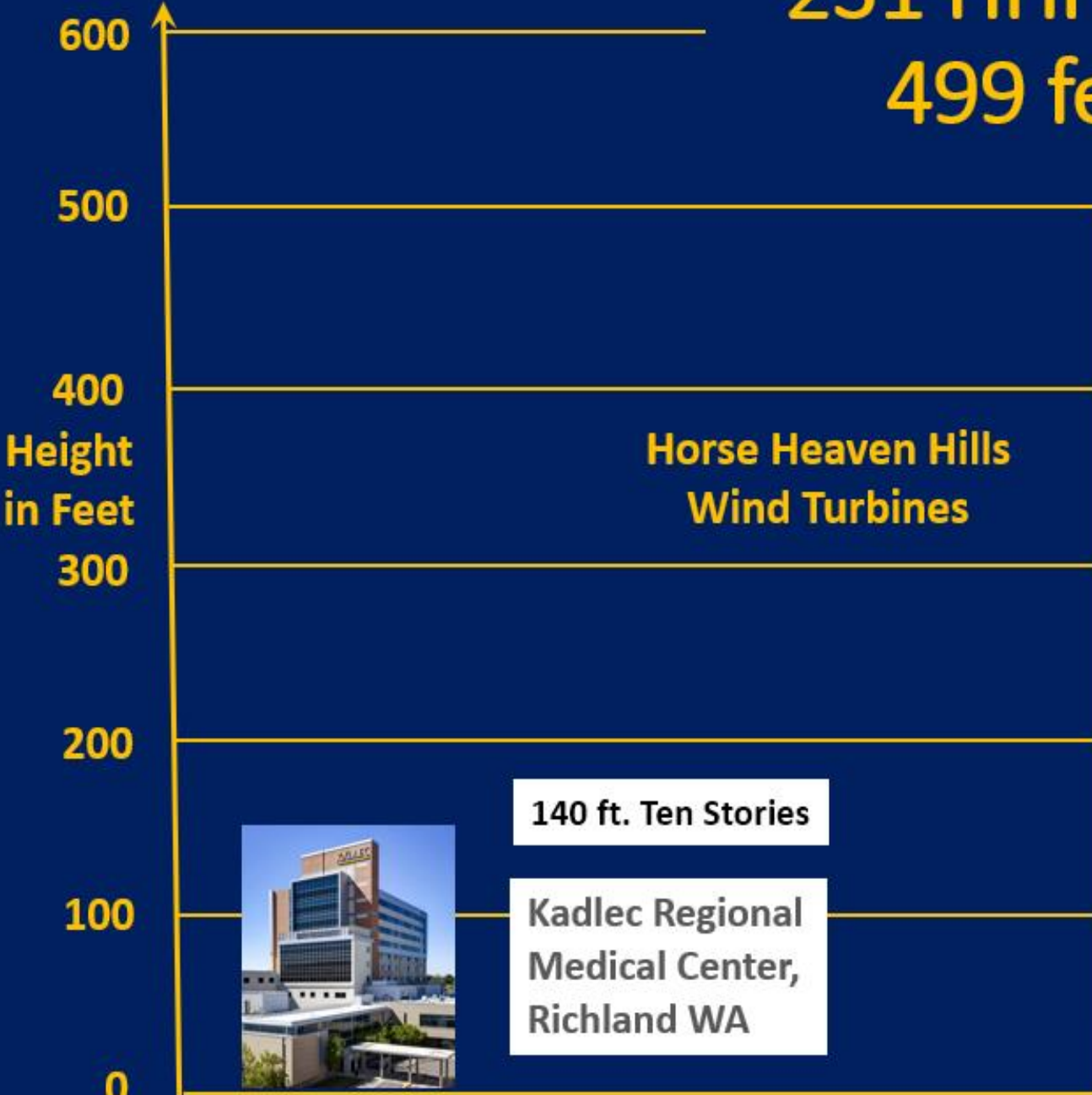
- 221 499 ft high turbines
- Over 72,000 acres = 112 Square Miles
- Over 100 miles of dirt roads
- 20 miles of new transmission lines
- 18 acres of lithium-ion battery storage

25 miles



231 HHH Wind Turbines 499 feet high each

671 ft.



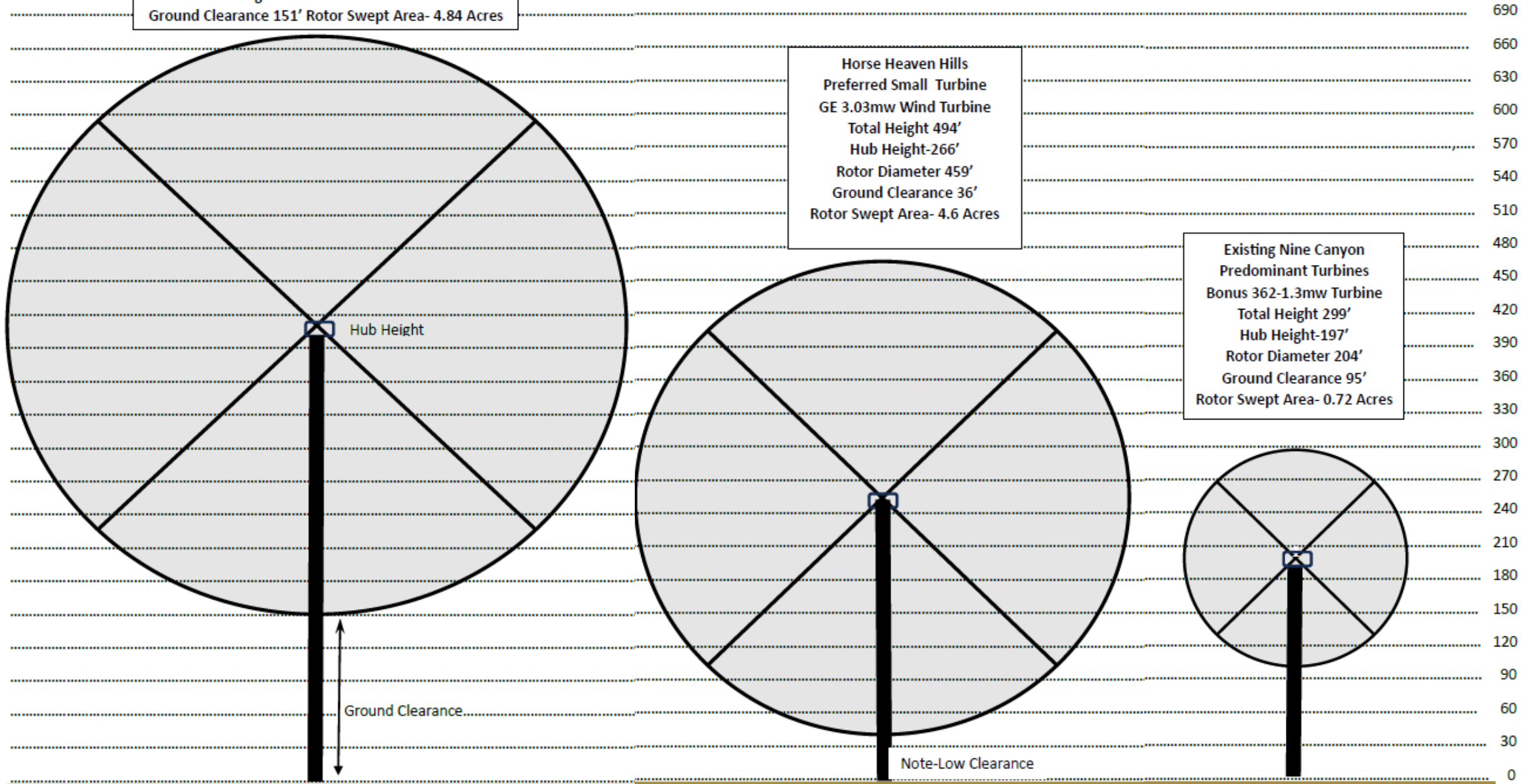
Horse Heaven Hills to Nine Canyon Turbine Height Comparison

EXHIBIT A

HHH Preferred Large Turbine Option
GE 5.5mw Wind Turbine-Total Height 671'
Hub Height-411' Rotor Diameter 518'
Ground Clearance 151' Rotor Swept Area- 4.84 Acres

Horse Heaven Hills Preferred Small Turbine
GE 3.03mw Wind Turbine
Total Height 494'
Hub Height-266'
Rotor Diameter 459'
Ground Clearance 36'
Rotor Swept Area- 4.6 Acres

Existing Nine Canyon Predominant Turbines
Bonus 362-1.3mw Turbine
Total Height 299'
Hub Height-197'
Rotor Diameter 204'
Ground Clearance 95'
Rotor Swept Area- 0.72 Acres



Economic Benefits

Scout Clean Energy claims for the full build-out of the project

Jobs:

- will create roughly 1,000 jobs during the two-phase construction period.
- about 450 to 500 temporary construction workers in each phase.
- About 20 permanent employees after construction.

Tax Revenue:

- would generate almost \$20 million in property tax revenues during the first full year of operation.
- Over the 35-year operating life of the project, the clean energy facility will pay around \$260 million in total property tax.

These fees will be paid to Benton County, and under current allocations the largest proportion of those funds would support local schools with about \$1 million in local county sales tax.

Reference:

https://www.efsec.wa.gov/sites/default/files/210011/00001/20210208_AppS_EconImpStdy.pdf and economic output are expressed in millions of dollars in Year 2021 dollars

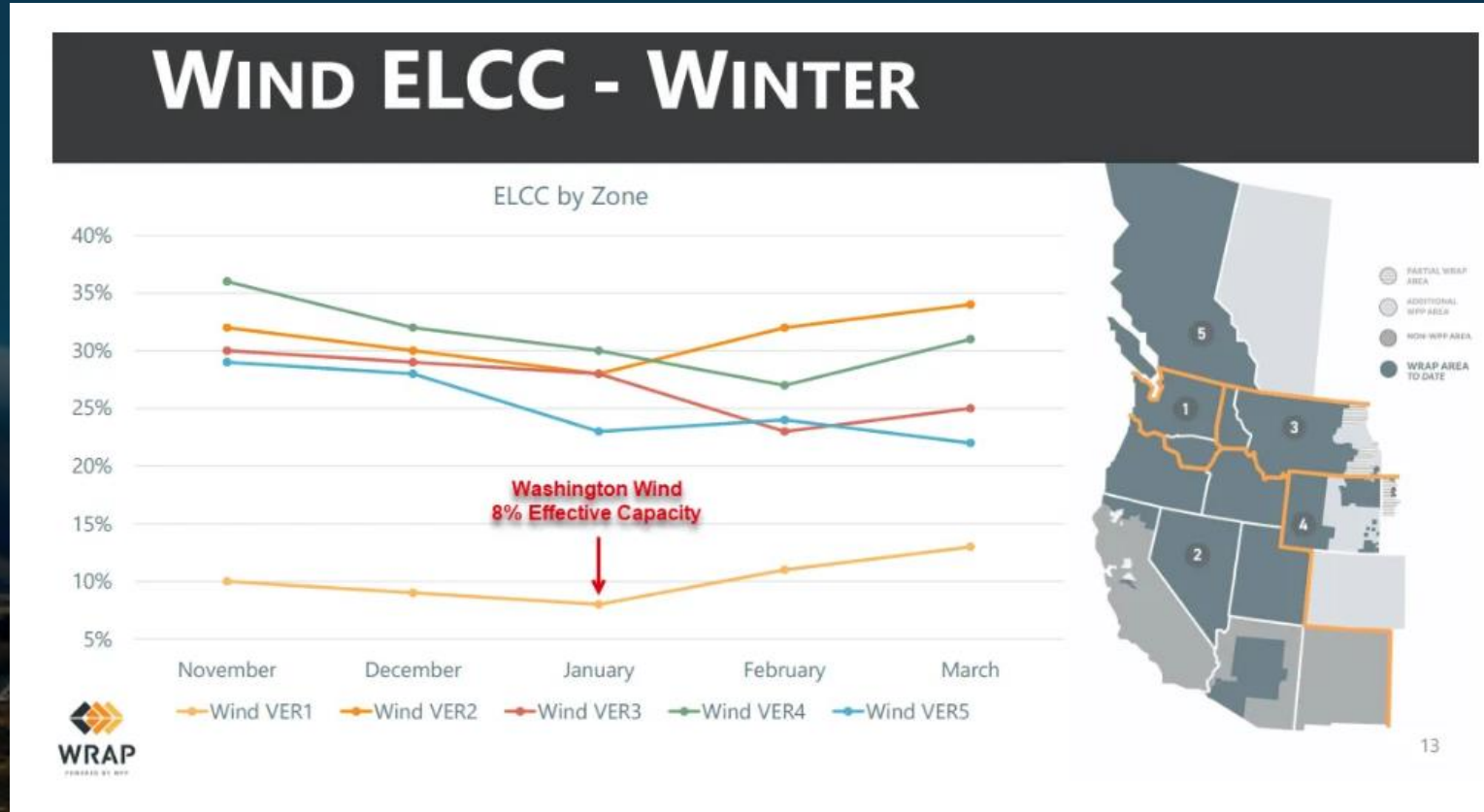
Unions Push for Local Hiring at Skookumchuck Wind Energy Project



...a poor track record of hiring local workers.

Power Generation Contribution – Unreliable & Not Timely

Generating capacity of the 850 MW Horse Heaven Hills wind farm would only generate 68 MW in January and 153 MW for August. The greatest need in summer for dependable generating capacity usually occurs in August and September when hot temperatures are still in play and the hydro system water flows have petered out.



Wind won't blow when we need it.

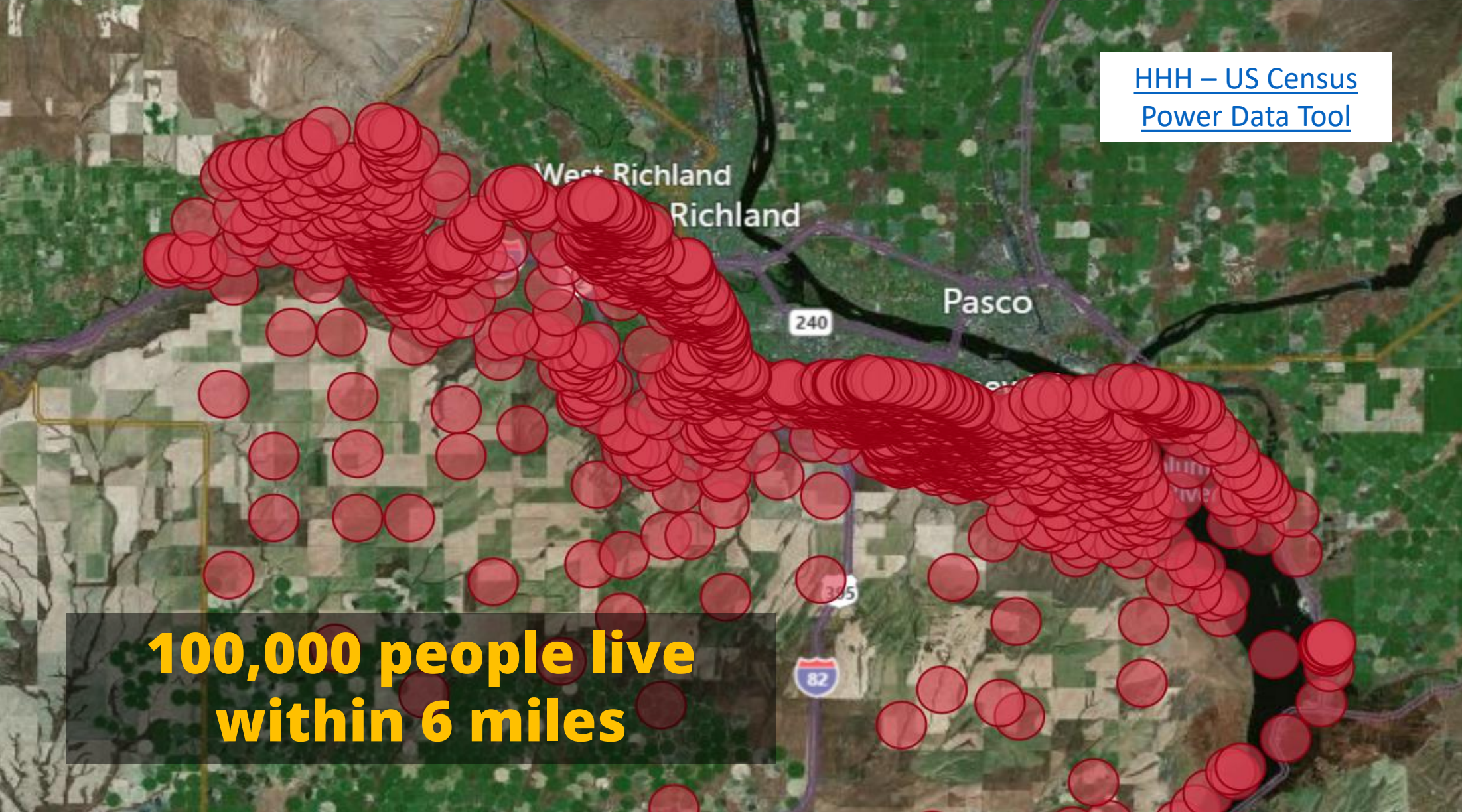
Reference Rick Dunn, Benton PUD General Manager

<https://www.tri-cityherald.com/opinion/opn-columns-blogs/article271879052.html#storylink=cpy>

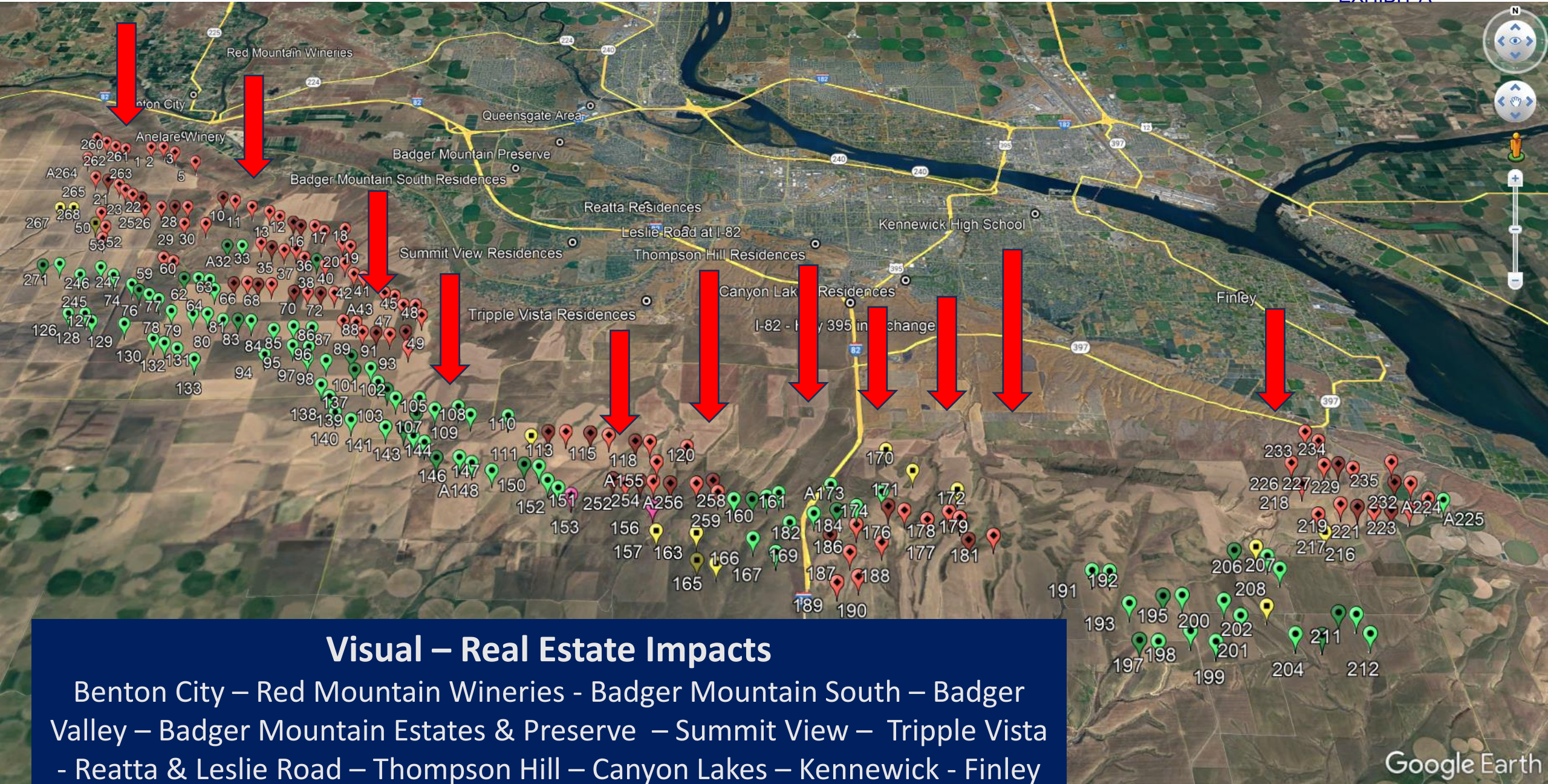
Economic Impacts on People in Benton & Franklin Counties

2020 POPULATION AT 6 MILES

[HHH – US Census
Power Data Tool](#)



**100,000 people live
within 6 miles**



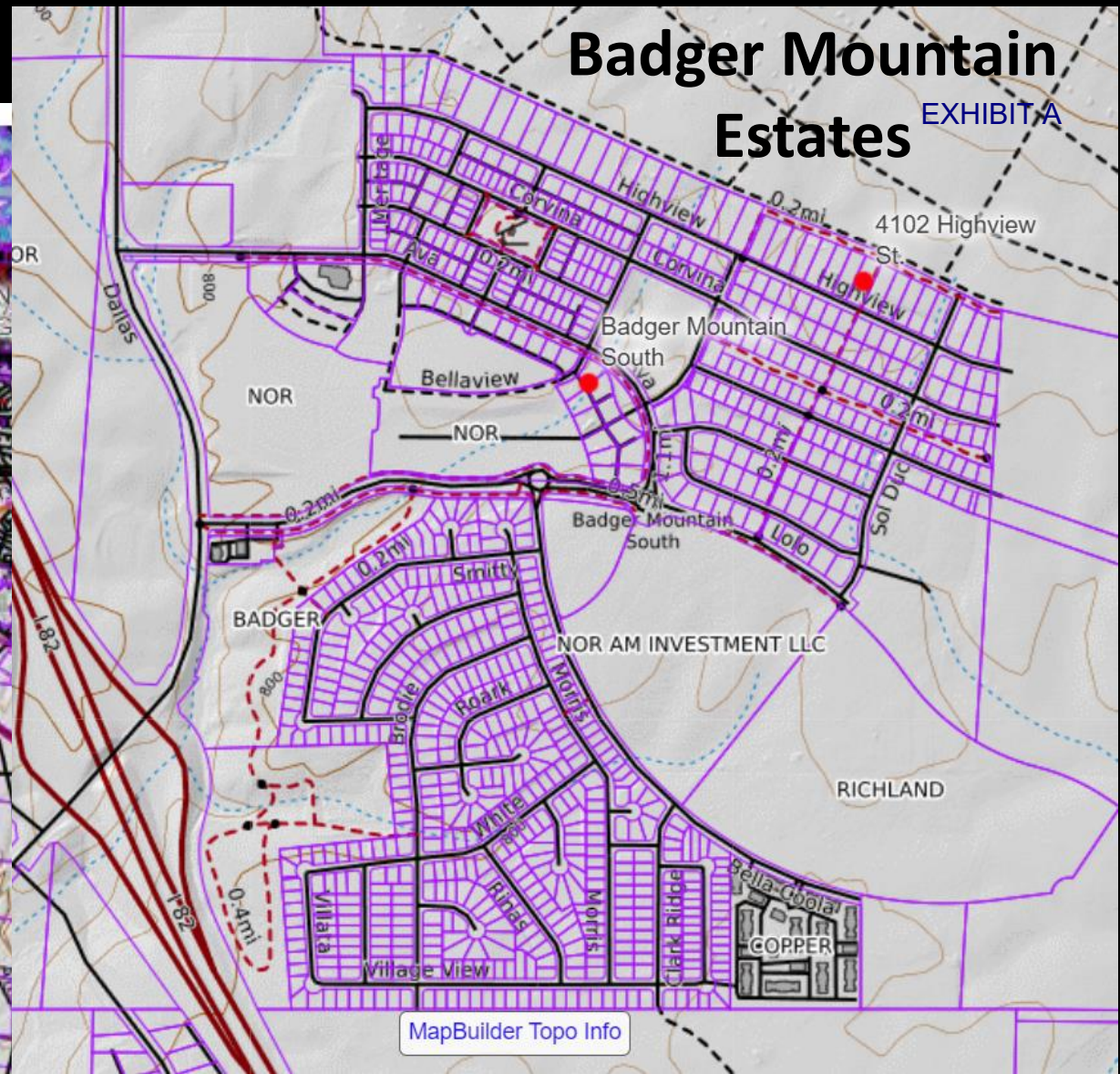
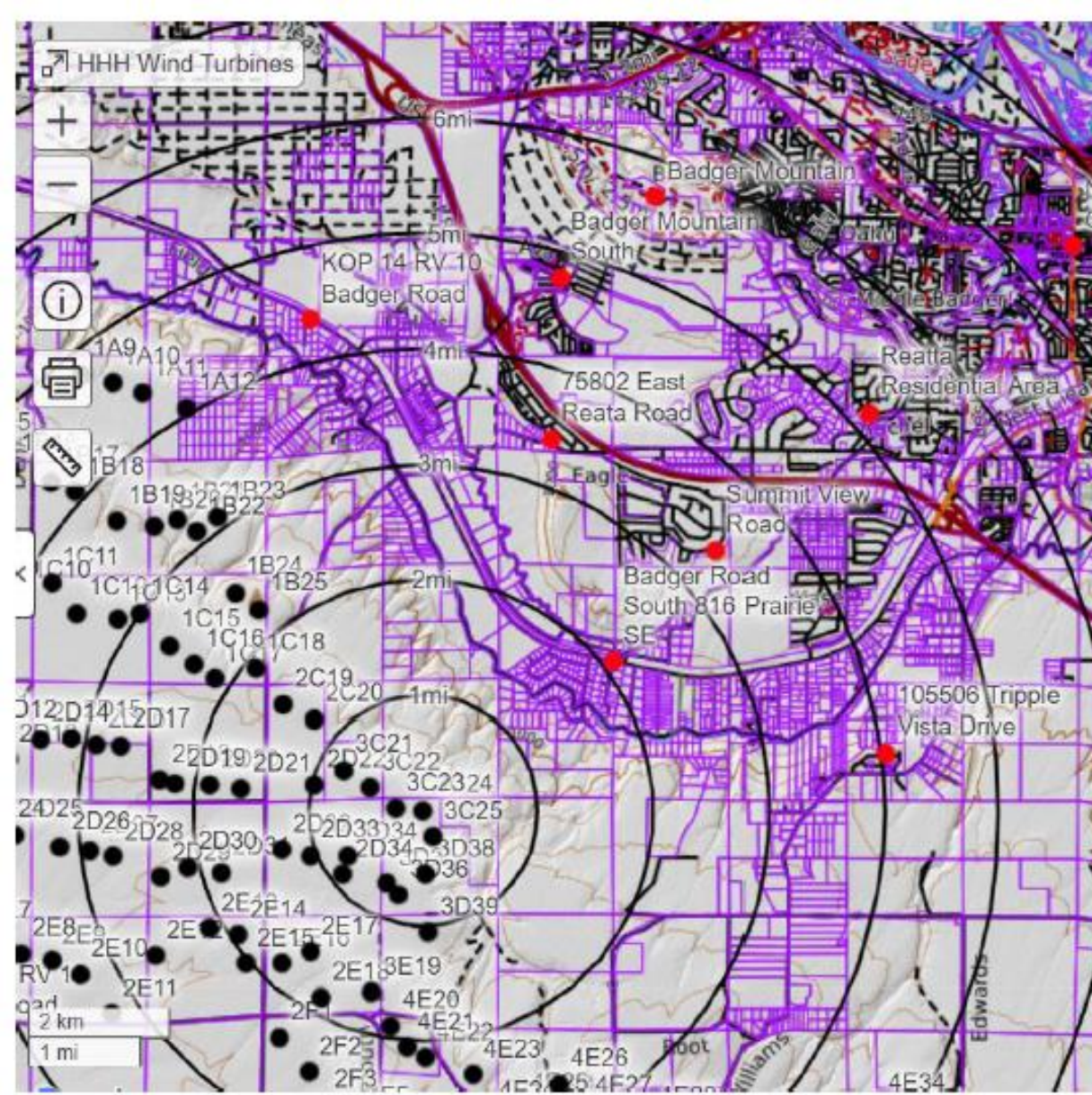
TCC visual and property appraisal experts' testimony warns of 20 to 30 percent reductions in property values.



This will threaten the future growth and development of the entire region.

**Canyon Lakes, Thompson Hill Residences, Summitview ...
\$700K to \$1 Million + Properties – Thousands of homes and businesses
in numerous residential communities.**

People Pay More for Views



SCENIC SOLUTIONS
THE SCIENCE OF SCENERY

Bottom Line on Economic Impacts

EXHIBIT A

- Comes down to location. **This is not rocket science.**
- People pay more for scenery – they avoid views of wind turbines, powerlines, substations, generating plants, and other types of energy industrial facilities.
- **Real estate agents will advise sellers to automatically lower their asking price by 20 to 30 percent.**
- **Properties in close proximity may not sell at all (Badger Valley, Kiona, ...).**
- **Homes with visible turbines are not the only impact. Neighboring places will be affected. (Benton City, Richland, Kennewick, Finley, Pasco, West Richland).**
- **The number of households affected by the visual impacts is much, much larger than just homes in close proximity (2023 Census Bureau – 84,477 housing units in Benton County with Dec 2024 median price of \$422,000).**
- **Calculated adverse economic impacts = potentially several \$billions.**
- **It will impact all Tri-Cities neighborhoods for decades to come.**

Google Earth

James Palmer, PhD and Dean Apostol
Visual Assessment Expert Witnesses - Testimony
Google Earth Pro – Interactive Geographic Model

1 - Anelare Winery - BLM Kiosk – McBee Grade Road

EXHIBIT A

May 25, 2023



Google Earth Pro
Computer Simulation



2 - Benton City - RV9

EXHIBIT A

May 5, 2023



TCC Google Earth Pro
Computer Simulation



3 - Fidelitas Winery – Sunset Road - Red Mountain

EXHIBIT A

September 6, 2023



TCC Google Earth Pro
Computer Simulation



4 - Badger Mountain South – Dallas Road – I-82

EXHIBIT A

May 24, 2023



Google Earth Pro Computer Simulation



7 - Summitview Residences South Kennewick

EXHIBIT A

September 5, 2023 8 AM



Google Earth Pro
Computer Simulation



9 - Thompson Hill Residences Kennewick Bob Olson Parkway

EXHIBIT A

September 6, 2023



TCC Google Earth Pro
Computer Simulation



10 - Canyon Lakes Community Kennewick

EXHIBIT A

September 6, 2023



TCC Google Earth Pro
Computer Simulation



11- Interstate 82 – Highway 395 Intersection, South of Kennewick

EXHIBIT A

September 6, 2023



TCC Google Earth Pro
Computer Simulation



12 - Finley Elementary School in Finley

EXHIBIT A

May 25, 2023



TCC Google Earth Pro
Computer Simulation



ADLS SHB 1173

- December 6, 2022 - TCC Proposal to Rep. April Connors & Rep. Mark Klicker
- January 6, 2023 – House Bill 1173 Pre-filed for introduction
- February 16, 2023 - Hearing in the House Environmental & Energy Committee.
- February 27, 2023 - House passed HB 1173 on a vote of 94 to 1.
- March 17, 2023 – Hearing in the Senate Committee on Environment, Energy & Technology
- April 8, 2023 - Senate passed SHB 1173 on a vote of 84 to 1.
- May 9, 2023 – Signed into Law by Governor Inslee.



Safe Skies Can Be Dark Skies

30-year Fire History on lands adjacent to the proposed Horse Heaven Hills Wind Farm Project

EXHIBIT A



Help

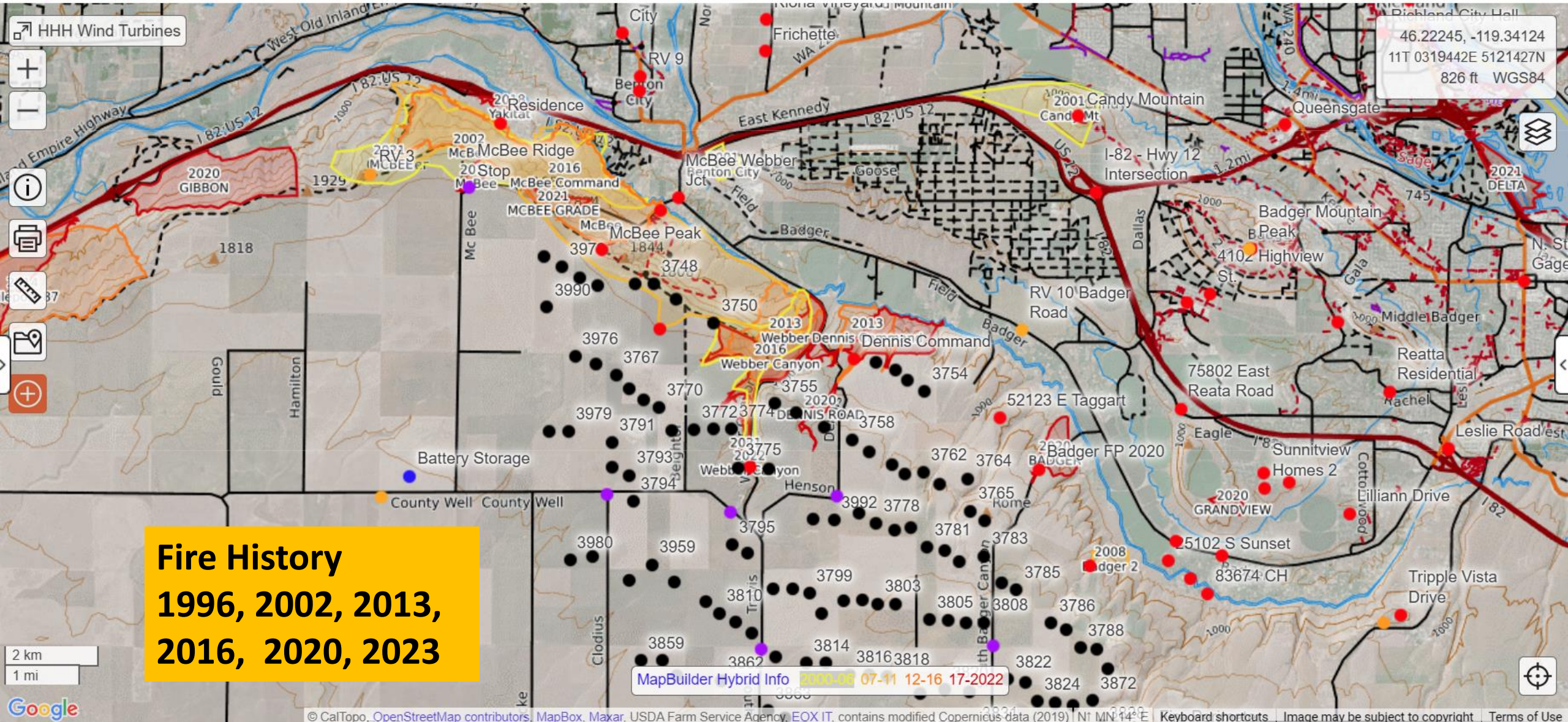
Enter coordinates or a location name

Settings

Close

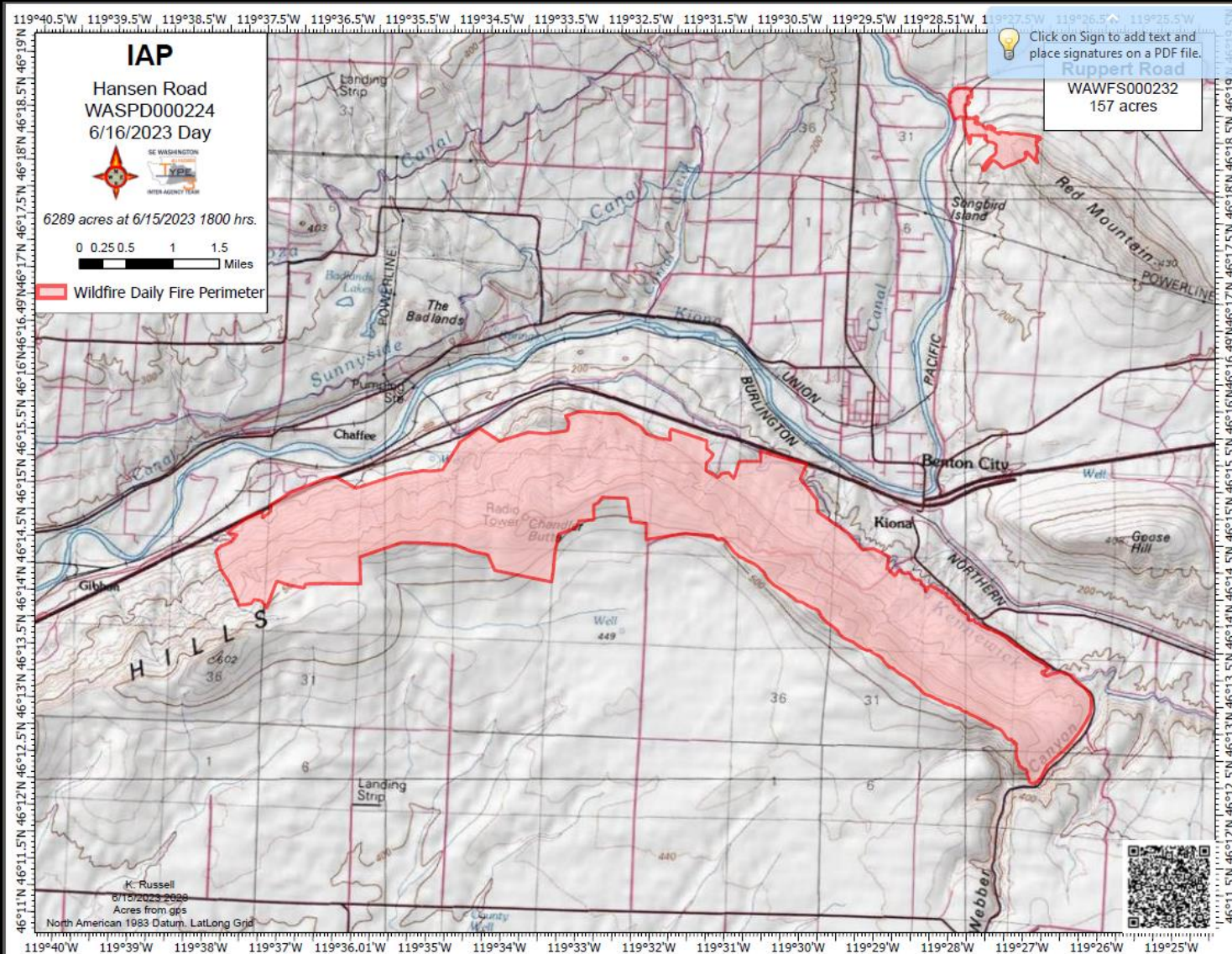
Your Data

Paul J Krupin



Fire Fighting Map & Guidance from June 16, 2023 Hansen Road Fire in Benton County, Washington

EXHIBIT A



Minimum Drop Heights for Airtankers and Water Scoopers

- SEAT/Amphibious SEAT = 60' (optimum 90') above the vegetation
- LAT = 150' above the vegetation
- VLAT = 200' above the vegetation
- Water Scooper (CL 215/415) = 150' above the vegetation

ATGS = Air Tactical Group Supervisor

ASM/LP = Aerial Supervision Module/Lead Plane

Type 3 Airtanker = 800-1,799 gallons (S-2T, SEAT)

Type 2 Airtanker = 1,800-2,999 gallons
(Convair 580, Q-400)

Type 1 or Large Airtanker (LAT) = 3,000-5,000 gallons
(BAe-146, RJ85, MD87, C-130)

VLAT = Very Large Airtanker = >8,000 gallons (DC10, 747)

**June 16, 2023
DC-10 VLAT
Dropping Fire
Retardant on
the Hansen
Road Fire
Benton City
WA Fire**

[YouTube](#)



Aerial fire fighting experts gave testimony that the wind turbines will create large “no-fly zones” that seriously hinder the ability to protect the property and people on lands adjacent to the wind turbine projects.



TCC Legislative Proposal HB 2117 – SB 6188

**Protect the aerial
firefighting suppression
requirements needed to
protect people and
property in known high
risk locations.**

**Representative Stephanie Barnard
Senator Matt Boehnke**

An aerial photograph taken from the perspective of someone inside a DC-10 aircraft, looking out over a landscape. The top of the image shows the underside of the aircraft's wing and part of the fuselage. Below, a large, dark, irregularly shaped area represents the fire perimeter, contrasting with the surrounding green and brown fields. A winding road or path is visible near the perimeter. The background shows a vast, flat landscape under a clear blue sky.

**Fire Perimeter – Photo from DC-10
June 16, 2023 Hansen Road Fire**

Legislative Proposal **HB 2117 – SB 6188**

**Died in Subcommittee.
Did not get in front of the
legislature.
Was nonetheless influential with
EFSEC in their recommendation.**

Representative Stephanie Barnard
Senator Matt Boehnke

Legislative Proposals

EXHIBIT A

Rep Mary Dye introduced HB 1188

“Restoring Local Authority Over Wind Projects”

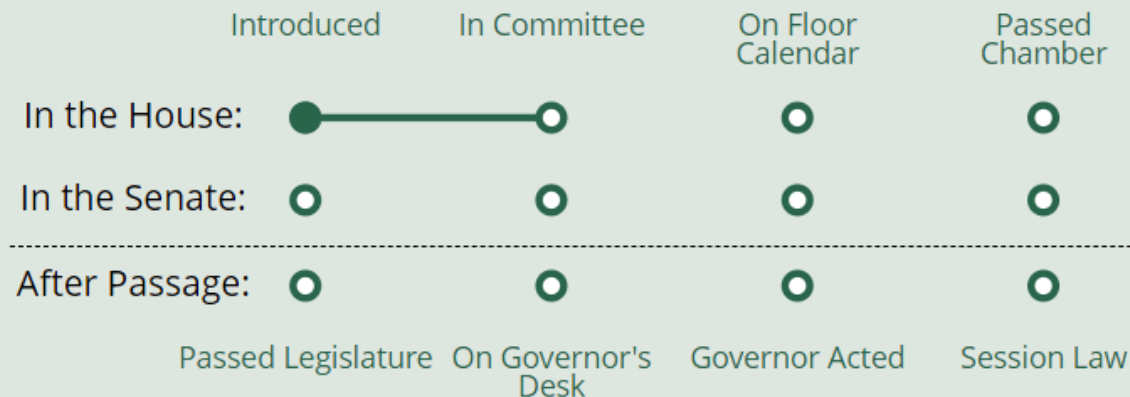
- TCC gave testimony on Monday January 20, 2025 in the Environment & Energy Committee Hearings – Herald Op-ed January 26, 2025.

As of Friday, January 24, 2025 11:30 AM

Current Version:
HB 1188

Current Status:
HEnv & Energy

Where is it in the process?



Presidential Directives

EXHIBIT A

January 20, 2025 – Four Executive Orders Signed

- Addresses projects on federal land only.
- HHH is a private project and is not located on federal land.
- Scout uses private funds and is economically viable because of the federal and state tax credits. If those were to change, then that would be a different story.

References

<https://www.jdsupra.com/legalnews/presidential-memorandum-on-wind-energy-7369821/>

<https://www.jdsupra.com/legalnews/trump-executive-actions-impacting-4419134/>

[Trump directive wind turbines - Google Search](#)

ID	Class	Color	Wildlife	Cultural	Visual	Aerial Firefighting	Proper Class
91	3	Red	XX	XX	XX	XX	Class 3 Red 3+
93	3	Red	XX	XX	XX	XX	Class 3 Red 3+
98	0	Green	XX	XX	XX	XX	Class 3 Red 3+
99	0	Green	XX	XX	XX	XX	Class 3 Red 3+
100	0	Green	XX	XX	XX	XX	Class 3 Red 3+
101	0	Green	XX	XX	XX	XX	Class 3 Red 3+
102	0	Green	XX	XX	XX	XX	Class 3 Red 3+
102	0	Green	XX	XX	XX	XX	Class 3 Red 3+
103	0	Green	XX	XX	XX	XX	Class 3 Red 3+
105	0	Green	XX	XX	XX	XX	Class 3 Red 3+
106	0	Green	XX	XX	XX	XX	Class 3 Red 3+
107	0	Green	XX	XX	XX	XX	Class 3 Red 3+
108	0	Green	XX	XX	XX	XX	Class 3 Red 3+
109	0	Green	XX	XX	XX	XX	Class 3 Red 3+
110	0	Green	XX	XX	XX	XX	Class 3 Red 3+
137	0	Green	XX	XX	XX	XX	Class 3 Red 3+
138	0	Green	XX	XX	XX	XX	Class 3 Red 3+
139	0	Green	XX	XX	XX	XX	Class 3 Red 3+
140	0	Green	XX	XX	XX	XX	Class 3 Red 3+
141	0	Green	XX	XX	XX	XX	Class 3 Red 3+
142	0	Green	XX	XX	XX	XX	Class 3 Red 3+
143	0	Green	XX	XX	XX	XX	Class 3 Red 3+
143	0	Green	XX	XX	XX	XX	Class 3 Red 3+
144	0	Green	XX	XX	XX	XX	Class 3 Red 3+

EXHIBIT A

Lawsuits
Petitions for Judicial Review
Submitted December 2, 2024.
Estimated two years for a Washington
Supreme Court Decision.
TCC estimated cost upwards of \$200K.

Tri-Cities CARES (Yakima Nation and Benton County) vs. EFSEC and the Governor of Washington State

Lawsuits Over Noncompliant Actions ~ Illegal Process

- Governor's edict ignores the record and the science (FEIS).
- Preempts local authorities and land use requirements .
- Relies on unsupported claims of need in violation of law.
- Wholesale dismissal of wildlife, cultural, visual & economic impacts, and aerial firefighting needs.
- Failure to balance to protect the public interest as required by state law.

Success = Remand to do it right = EFSEC's first Recommendation

... Company still does not have a source of water.

Image © 2024 Airbus

Tri-Cities C.A.R.E.S.

[Learn More](#) [Take Action](#) [About Us](#) [Projects](#)
[Resources](#) [Contact Us](#)



[Please Donate](#)

The battle is not over.

www.TriCitiesCARES.org

[Learn More](#)

*Community Action for
Responsible Environmental
Stewardship*

[Latest News
and
Milestones](#)

To: Tim

From: Tana

Re: Potential Artworks for Vista Field

Tim. Below are some potential artwork options for consideration at Vista Field:

1. “Hellcat plane flying in the sky” as a vinyl wrap on side of Vista Field maintenance storage hangar. This artwork could create a “terminated vista” for the approach to Vista Field from Kellogg Street by placing a vinyl wrap on the large wall of the remaining former hangar turned storage building. The plane would help showcase ties to Vista Field’s aviation history of providing take off/landing training for Naval Aviators. The Hellcat is one of the planes used to train pilots at Vista Field. The use of a single plane against a blue-sky background would create a stunning view approaching the Southern Gateway. Vinyl wraps would also be used to minimize the “man door” and the large PUD utility box along the street so the eye is drawn toward Vista Field. And an educational display panel would be hung on the side of the hangar with more photos and information about Vista Field’s aviation history. This panel would complement the two created for the Pavilion project, and a reuse of the steel decking could be placed as a “sidewalk” in front of the mural, providing access to those interested in taking photos with the mural.



2. Vinyl wraps for the 7+ larger utility boxes at Vista Field: This could help minimize the visual distraction from boxes located within the landscaping or become stand-alone artworks in themselves for those located adjacent the pavilions, water features, or intersections. The wraps could showcase additional WWII airplanes, highlight a variety of other moments in Kennewick's vast history (farming, barging, rail, people, etc.); or showcase colorful paintings, designs, or photos.

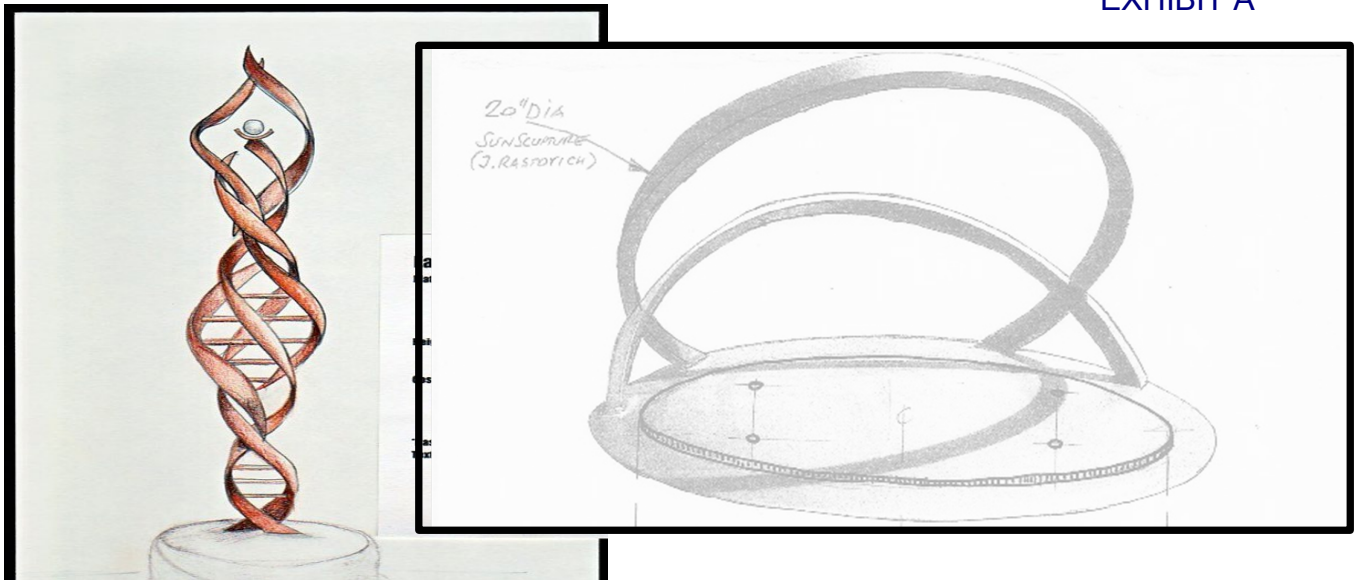


3. Install City of Kennewick’s metal “Fish” in the Vista Field stream (fish were previously installed on Canal Drive by railroad underpass—removed to storage during street renovations). The largest of the fish segments is roughly 9 feet across (from tip of first fish, to tail of fourth fish). Each fish individually measures roughly 2.5 to 3 feet wide. Each of the “fish segments” include two anchor poles; and the spacing between the two anchor poles varies from roughly 3.5 feet to 4 feet depending on the segment. One segment has two fish welded tip to tail; two segments have 3 fish, and one segment has four fish.

Staff had some concerns with boulder placement impacting/changing the water flow, and asked Gary Hall who was the contractor who worked with City on their original installation; Gary suggested perhaps a concrete anchor for the mounting poles with rocks pressed into the sides to make it look more natural in the water. He also said that installation would need to consider whether it would impact water flow/levels to any significant degree.



4. Mars artwork at Daybreak Commons—possibly revisit the idea of a “Mars” installation at Vista Field if the Silas Project organizer is willing to wait for port to fund/invest in Daybreak Commons development (*last year that project had indicated a desire to proceed sooner than we were able to accommodate*). If so, we could consider a “Mars artwork” installation to represent the orbit Mars takes overhead as being in line with the Daybreak Commons area of Vista Field—any installation would need to also consider surrounding development, lighting, and maintenance.



5. Bronze Makers: It was suggested to consider a series of bronze marker plaques in *shape of planes* embedded in walkway possibly at Daybreak Commons. Could be engraved with peoples' names on them for those that “buy a marker” or to recognize their contribution to the port or their donation to Vista Field or on behalf of someone who flew at Vista Field or was involved with WWII aviation or perhaps just that they bought a plaque to support artwork at Vista Field. Idea was similar to people buying pickets at the Playground of Dreams or tiles at the Carousel of Dreams (*note: bronze plaques are expensive given the increased cost of metal--so I'm not sure an affordable purchase price can be found if it is set high enough to cover the cost of plaque/staff time and effort to coordinate “selling plane markers”, also not sure if/how the port's accounting department would feel about the handling/processing/record retention of such payments—perhaps it could be something done in partnership with a non-profit organization whereby the Port provides the location for placement and specifies what style marker and the non-profit coordinates the sales in advance of some planned installation date*).



6. Bench with picture frame was an idea suggested by Lisa Shumacher inspired by an image she had seen on a travel site. The large picture frame was part of a bench in front, so when someone takes a photo of those on the bench, it appears they are part of the “framed photo.” Similarly, huge “frames” are also done as a stand-alone (in Vegas and other international locations) ground mounted frame so that people can gather “within” and get photos taken with a scenic/picturesque background.



7. Large oversize chairs or benches as seen in many visitor destinations around the world; including the one pictured below from Napa Valley featuring our very own Commissioner Moak!



Potential Artworks

2025-2026



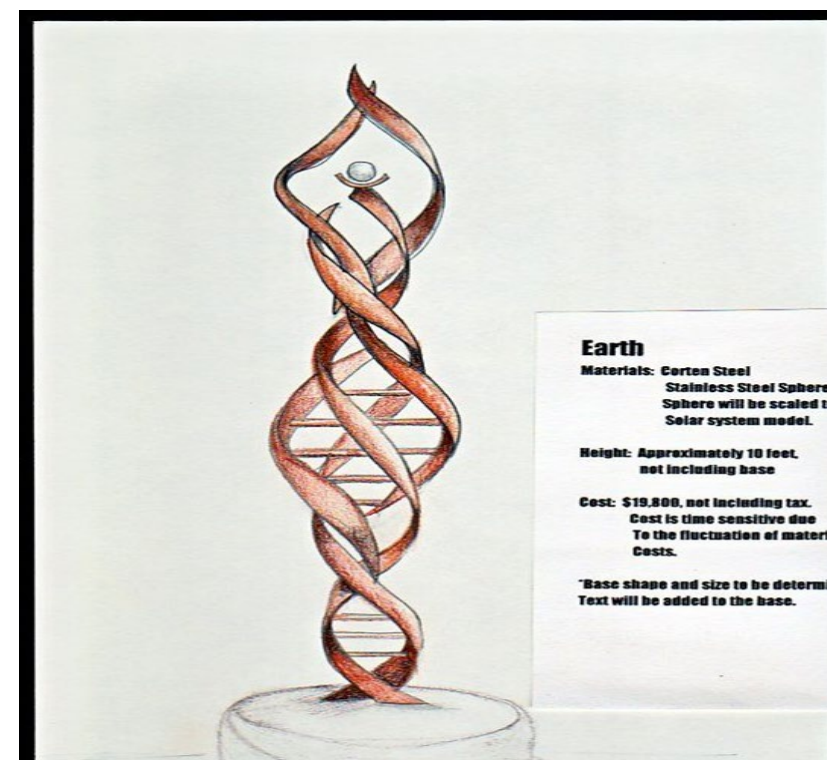
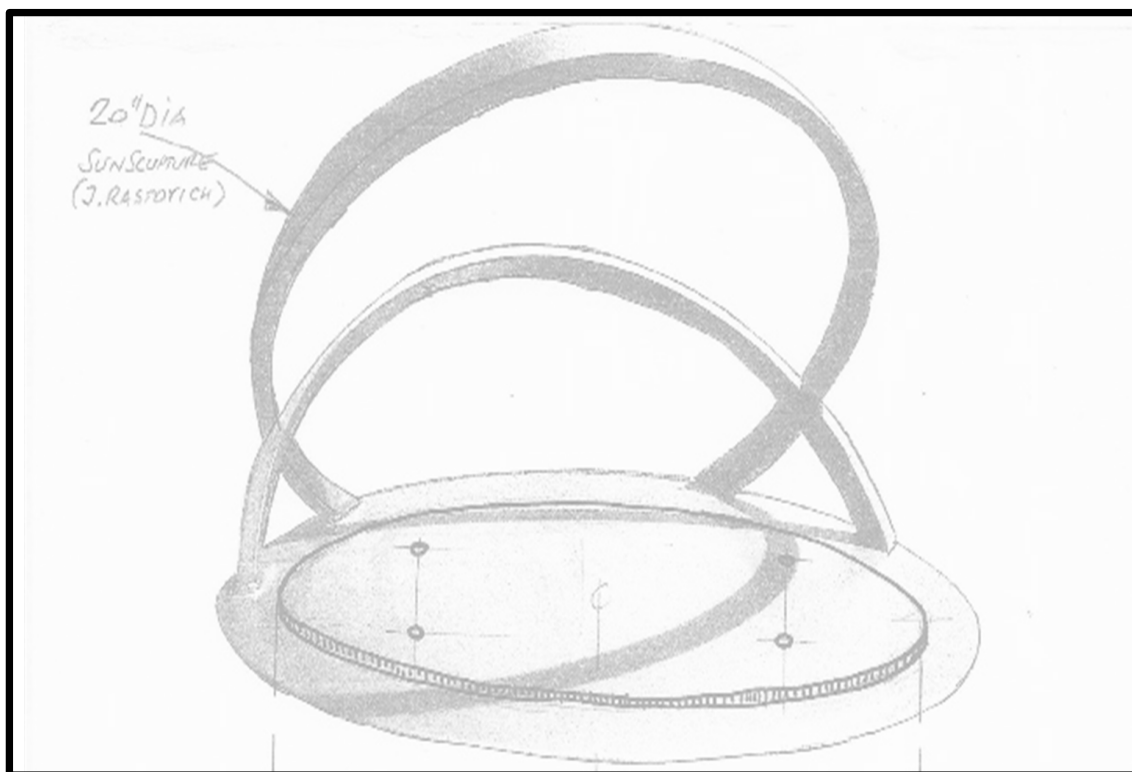
Utility Box Artwraps



Metal Fish / Possible City of Kennewick Partnership



Silas Project / Mars Artwork @ Daybreak Commons



Bronze Markers

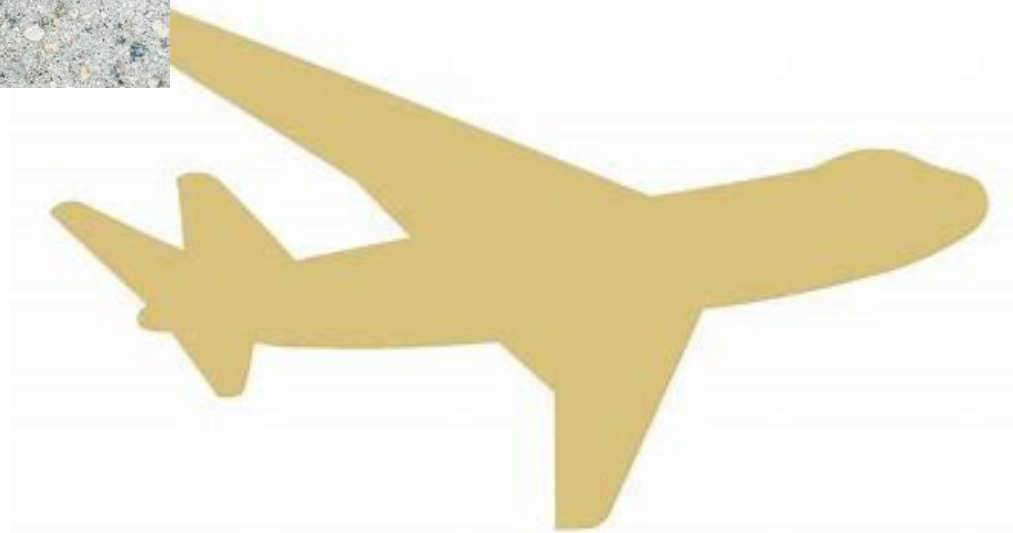


© Helen Page / Travel Signposts



alamy

Image ID: E110215
www.alamy.com



Bench & Frame / Frame



Giant Chairs/Benches



PORT OF KENNEWICK

Resolution No. 2025-02

**A RESOLUTION OF THE PORT OF KENNEWICK
BOARD OF COMMISSIONERS IDENTIFYING PREFERRED ARTWORK(S)
FOR 2025-2026 WORK PLAN**

WHEREAS, the Commission approved as a goal for the Port Chief Executive Officer (“CEO”) to propose and vet potential artwork projects; and

WHEREAS, the CEO identified and presented a variety of potential artwork opportunities for Commission discussion, along with preliminary cost estimates and related considerations; and

WHEREAS, the Port Commission indicated a preference for a significant Hellcat Mural Project including related appurtenance (associated PUD box wrap, painting, lighting, educational panel, and reuse of historic metal decking for a walkway) to be installed at Vista Field’s Southern Gateway; and

WHEREAS, the Hellcat Mural Project is anticipated to fully expend the 2025-2026 art budget; and

WHEREAS, while the Port Commission desires to prioritize the Hellcat Mural Project, it also desires that any remaining art funds would thereafter be considered to art wrap one or more of the other PUD/electrical boxes within Vista Field’s Phase One development as appropriate.

NOW, THEREFORE, BE IT HEREBY RESOLVED the Board of Commissioners of the Port of Kennewick hereby accepts the ranked list of artworks (Exhibit A) as fulfillment of Goal #9, “Propose and vet potential alternative artwork projects,” and directs staff to implement the Hellcat Mural project within the 2025-2026 Work Plan.

ADOPTED by the Board of Commissioners of the Port of Kennewick this 11th day of February 2025.

**PORT of KENNEWICK
BOARD of COMMISSIONERS**

By: _____

SKIP NOVAKOVICH, *President*

By: _____

KENNETH HOHENBERG, *Vice President*

By: _____

THOMAS MOAK, *Secretary*

Potential Artworks by Ranked Priority 2025-2026 Work Plan / Biennial Budget

Recognize that the objective is to provide a list and analysis of potential art projects, not the actual commissioning or purchase of the art, or engineering and installation; this list provides guidance to staff.

Staff provided a list of possible artworks, and the commission asked to “rank order” them according to their priority preference (or to eliminate from list entirely). *The following table, and the following document offer photos, notes, and rough cost estimates to assist in your deliberation and ranked evaluation.*

As commission considers these ideas, please give thoughts to rough cost estimates, pros and cons, time requirements (project complexity, including any administrative follow-up, etc.).

Also, please recognize that implementation of any artwork project would likely be subsident to

Potential Artworks	Please rank each 1 to 7 (1 is highest priority, 7 lowest; and an X would indicate it should be removed from list)			Estimate Cost
Hell Cat Mural	1	1	1	\$95,000
Utility Box Wraps	2	2	2	\$40,000
City of Kennewick Repurposed Fish		X	4	\$15,000
Mars Artwork / Silas Project		6	3	\$25,000
Bronze Markers		5	X	\$20,000
Art Frames / Benches		3	6	\$40,000
Giant Chair		4	5	\$25,000
Estimated Total				\$260,000

implementing the current grant-funded construction projects and land sales activities identified by the commission.

Total artwork budget for the two-year (2025-2026) biennium is \$100,000.

MOTION TO APPROVE RESOLUTION 2025-02:

I move approval of Resolution 2025-02 accepting the ranked list of artworks as fulfillment of CEO Goal #9, "Propose and vet potential alternative artwork projects," and directing staff to implement the Hellcat Mural project within the 2025-2026 Work Plan.