

Executive Office & Hangar Space *Available Hangars*

Hangar No.	Square Feet	Price PSF	Monthly Rent	Leasehold Tax	Monthly Rent + LHT
B	4,500		LEASED / NOT AVAILABLE		
C	4,500	\$.30	\$ 1,350.00	\$ 173.34	\$ 1,523.34
T-Hangar	Not Available		\$ 145.00	\$ 18.62	\$163.62

- *Leasehold Tax 12.84% of Net Lease Amount*
- *Separately Metered Utilities (Except W/S) – Tenant's Responsibility*

HANGAR C



Reception_Kitchen



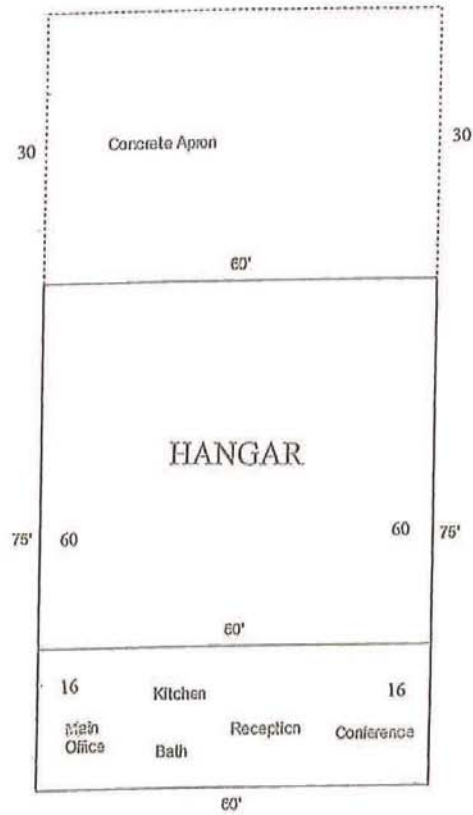
Office / Conference


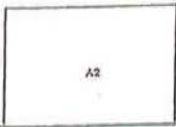


Office 2



Floor Plan



SKETCH CALCULATIONS		Perimeter	Area
 A1	A1 : 60.0 x 75.0 =		4500.0
	First Floor		4500.0
 A2	A2: 60.0 x 30.0		1800.0
	Concrete Apron		1800.0
	Total Living Area		960.0

Port of Kennewick as Owner, asserts that information contained herein is submitted without representation or warranty. The information above has been obtained from sources believed reliable. All information is subject to error, omission, price change, changes in terms and conditions, prior sale and/or lease, withdrawal from the market without notice etc.

