

# LAND FOR SALE

PRIME SOUTHRIDGE DEVELOPMENT OPPORTUNITY



- ⇒ Desirable South Kennewick Location (Benton County)
- ⇒ Lot Sizes—1.34 to 2.69 acres
- ⇒ Neighborhood Mix—Medical, Residential, Restaurants, Hotels, Sports Complex, Entertainment
- ⇒ Cross Streets—Ridgeline Drive, West 36th, Southridge Boulevard
- ⇒ Addresses: 3600 Southridge Blvd, 3700 Southridge Blvd, 5810 Ridgeline Drive, 6706 Ridgeline Drive
- ⇒ Zoning—Commercial Community
- ⇒ Utilities—Water, Sewer, Electric, Natural Gas

**\$7.00 psf**

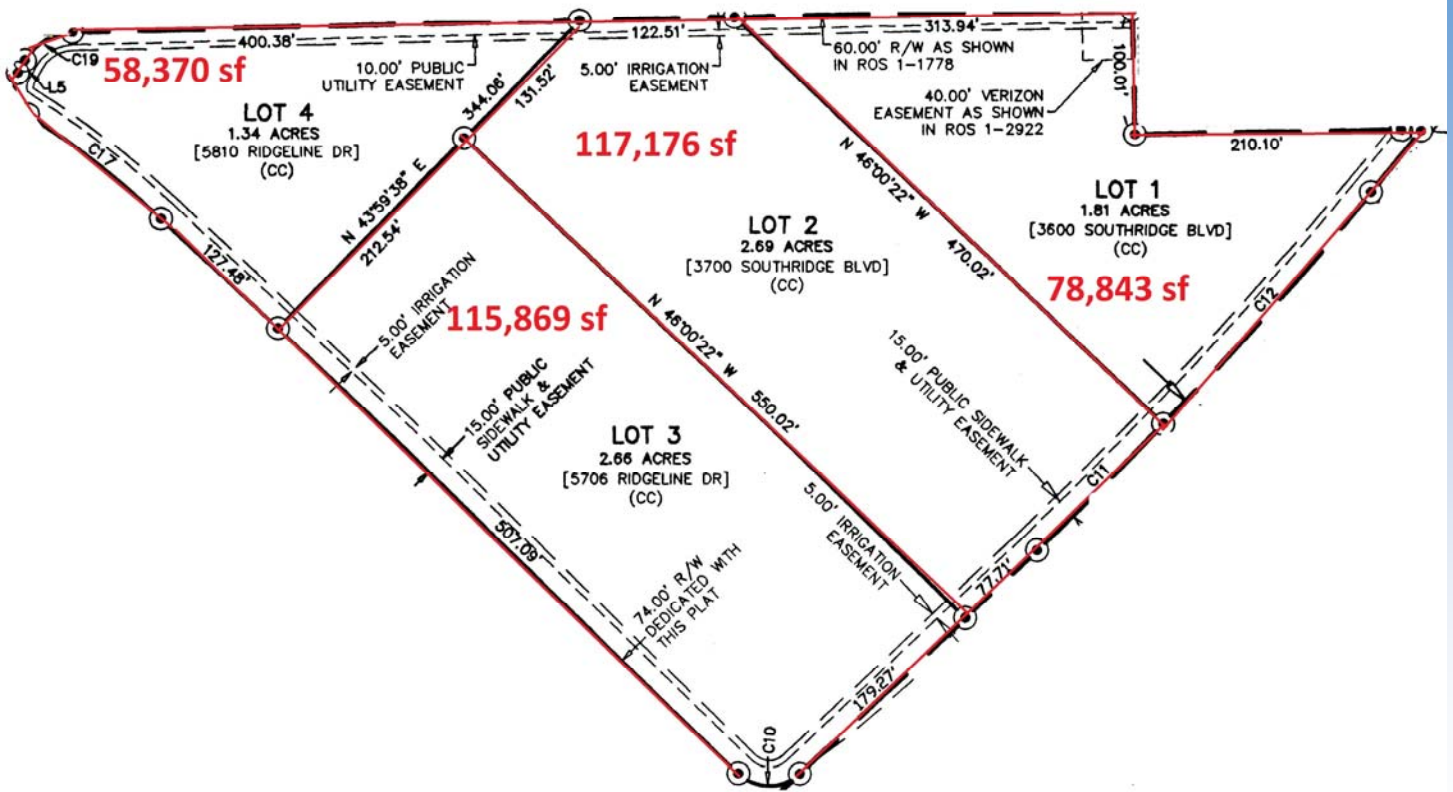


Port of Kennewick  
WWW.PORTOFKENNEWICK.ORG

Amber Hanchette  
Director | Real Estate & Operations  
(509) 586-1186  
Amber@PortOfKennewick.org

350 Clover Island Drive Suite 200 Kennewick, WA 99336

[www.PortOfKennewick.org](http://www.PortOfKennewick.org)



Lot 1	PTN: 1-1689-301-3167-001	1.81 acres	78,843 sf
Lot 2	PTN: 1-1689-301-3167-002	2.69 acres	117,176 sf
Lot 3	PTN: 1-1689-301-3167-003	2.66 acres	115,869 sf
Lot 4	PTN: 1-1689-301-3167-004	1.34 acres	58,370 sf

All offers are subject to Port of Kennewick Commissioner Board approval prior to Offer Acceptance.

