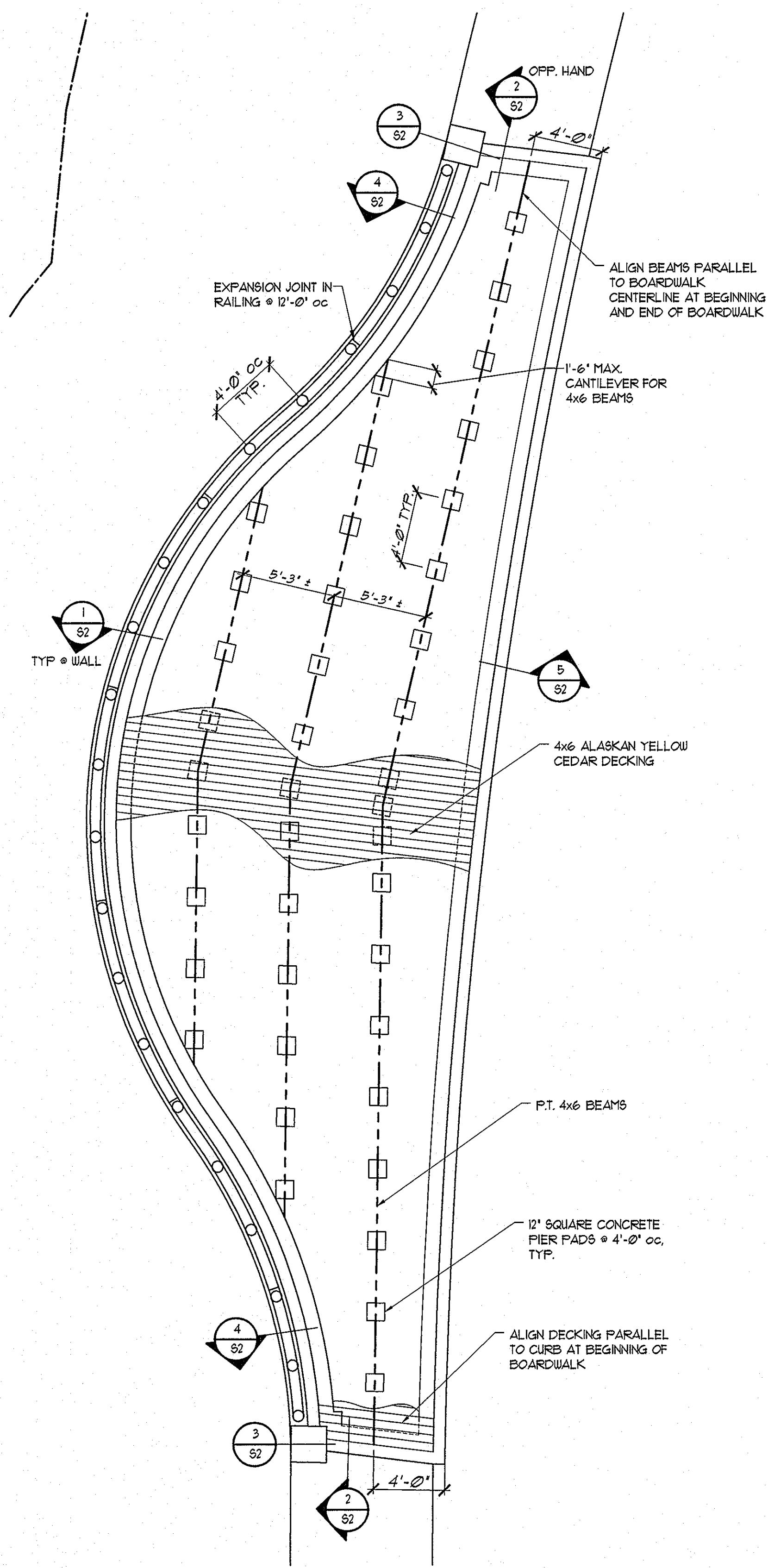
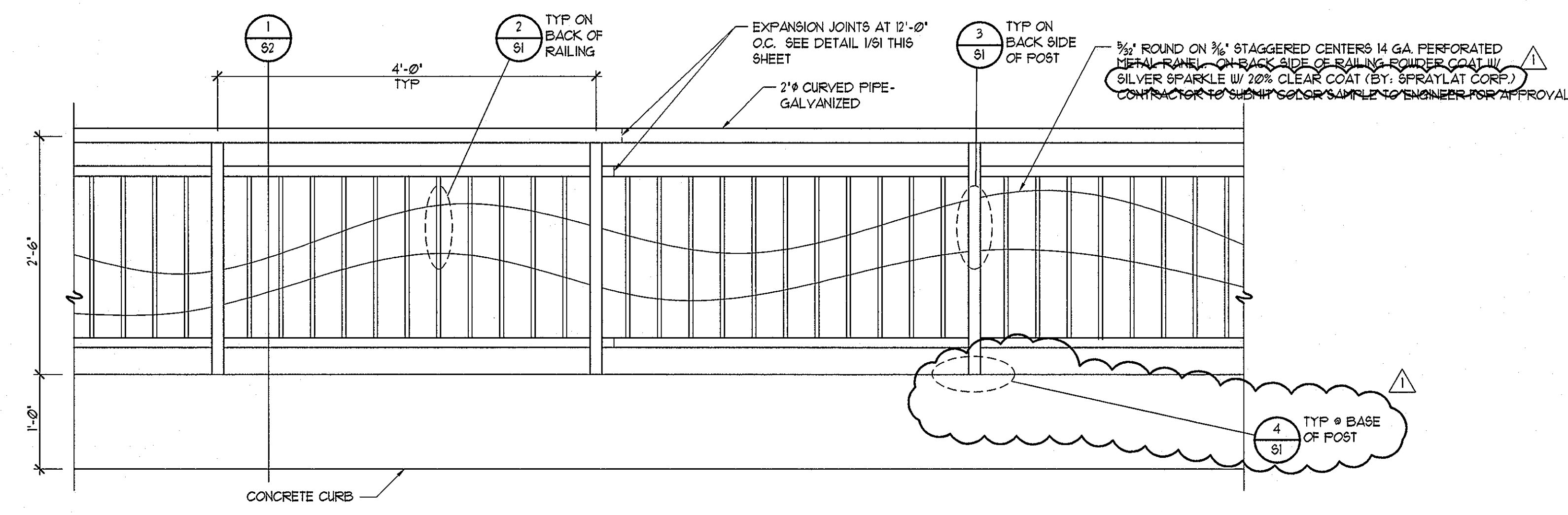


Plotted on Jul 30, 2010 - 2:08 PM, Modified 7-30-10
 H:\PROJECTS\FILES\2007\07302 - CLOVER ISLAND CAUSEWAY\AUTOCAD FILES\CLOVER ISLAND SHORELINES\1



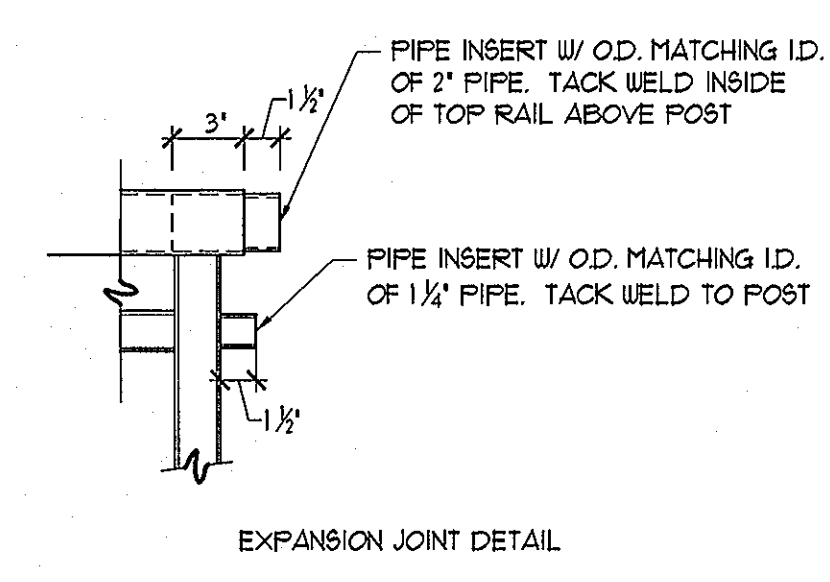
A
 S1
RAILING PLAN
 1:5

NOTE:
 SEE DRAWING C6 FOR RAILING
 AND BOARDWALK LAYOUT

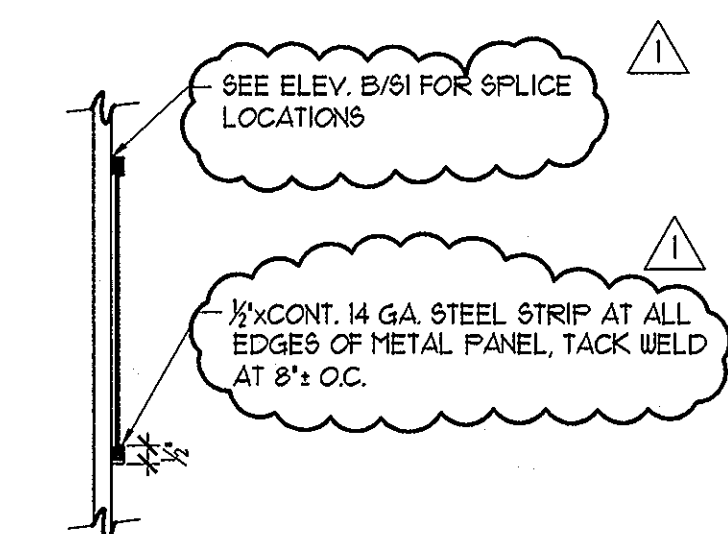


B
 S1
RAILING ELEVATION
 1"=1'-0"

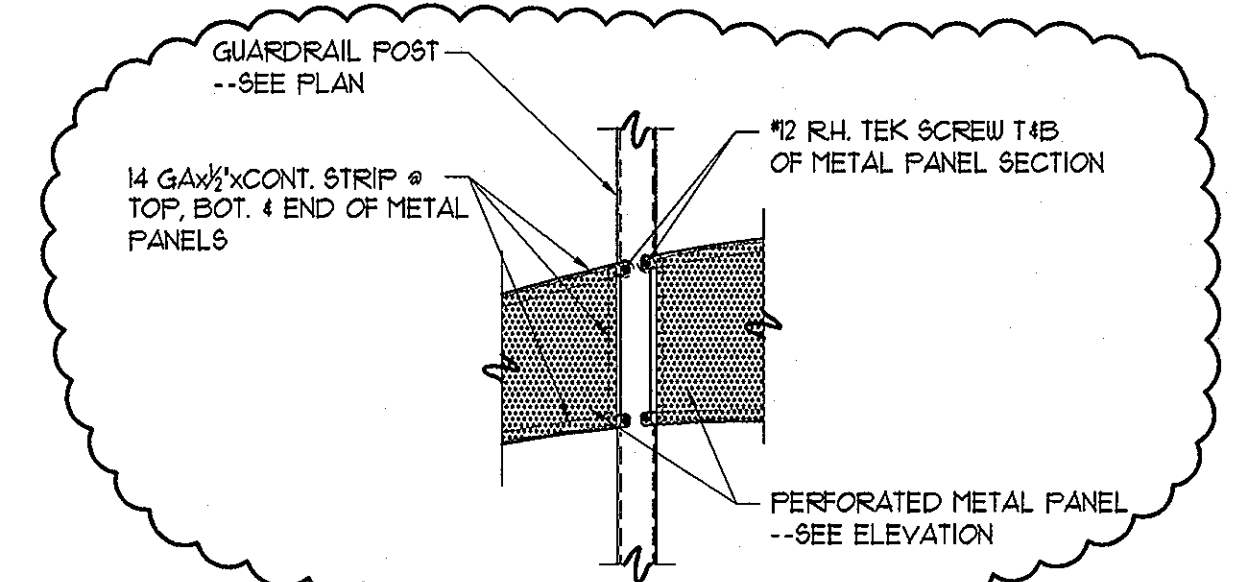
NOTE:
 CONTRACTOR TO PROVIDE WAVY PATTERN FOR
 PERFORATED METAL PANEL W/ MAXIMUM DEPTH OF 8" AND
 MINIMUM DEPTH OF 5". CONTRACTOR TO SUBMIT
 DIMENSIONED WAVE PATTERN TO ENGINEER FOR APPROVAL.



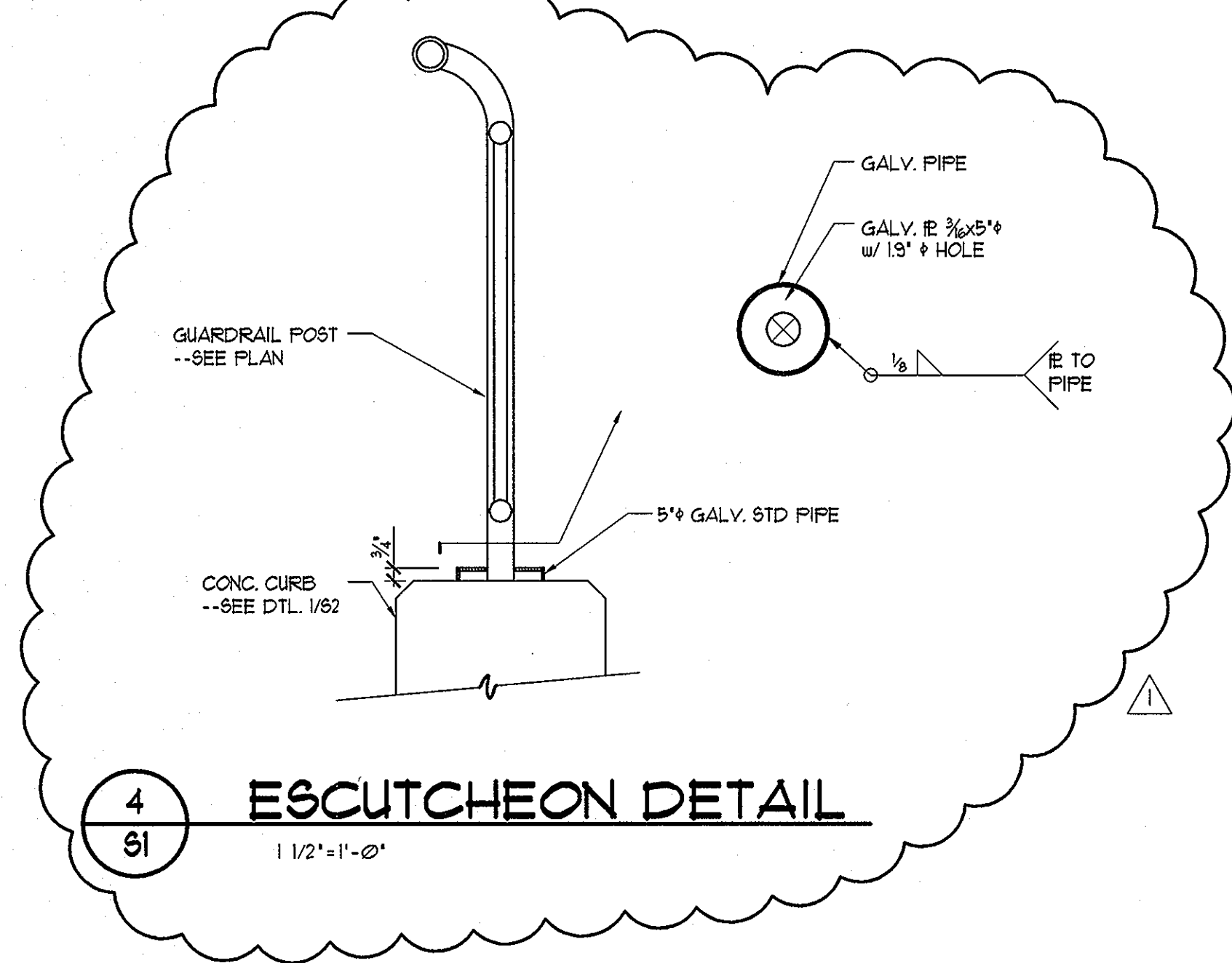
1
 S1
SECTION
 1 1/2"=1'-0"



2
 S1
SECTION
 NO SCALE



3
 S1
SECTION
 NO SCALE



4
 S1
ESCUTCHEON DETAIL
 1 1/2"=1'-0"

- GENERAL NOTES:**
- ALL MATERIAL AND WORK SHALL BE IN ACCORDANCE WITH THE REQUIREMENTS OF THE WASHINGTON STATE DEPARTMENT OF TRANSPORTATION, "STANDARD SPECIFICATIONS FOR ROAD, BRIDGE AND MUNICIPAL CONSTRUCTION" 2008 EDITION.
 - DESIGN LIVE LOAD: 100 PSF
 - MATERIAL SPECIFICATIONS:
 STRUCTURAL STEEL: SOLID STOCK: AASHTO M 210 GR36
 PIPE: ASTM A53 GRADE B.
 ALL STEEL MEMBERS TO BE GALVANIZED PER AASHTO M 232
 BOLTS: ASTM F 1554 GRADE 36
 NUTS: AASHTO M 293 GRADE A
 WASHERS: ASTM F 436
 ALL CONNECTION HARDWARE TO BE GALVANIZED PER AASHTO M 232
 CONCRETE: CLASS 3000
 REINFORCING BAR: AASHTO M 31 GRADE 60
 TIMBER BEAMS: PRESSURE TREATED DOUG FIR NO. 1 OR BETTER
 TIMBER DECKING: ALASKAN YELLOW CEDAR
 - ALL DIMENSIONS SHOWN ARE MEASURED HORIZONTALLY OR VERTICALLY UNLESS NOTED OTHERWISE.
 - CONTRACTOR TO FIELD VERIFY ALL CONTROLLING DIMENSIONS AND NOTIFY ENGINEER IF ACTUAL CONDITIONS VARY SIGNIFICANTLY FROM THAT SHOWN IN THESE PLANS.

DESIGNED: SWJ
 DRAWN: CC
 CHECKED: DS
 SCALE: H: N/A, V: N/A
 JUL 2010 2652
 SHEET
 S1

REV. NO. DATE
 1-30-2010

JOSEPH C. GRILLER
 STATE OF WASHINGTON
 PROFESSIONAL ENGINEER
 7/30/10